

*Some New Pieces for
the Lute*

Second Edition

Composed by Joaquim Bogunyà Chesà

*To Willy, my master,
for having taught me
everything I know
about the Lute.*

Introduction to the Second Edition

I sincerely thought I would never publish a book with pieces of my own again. So, they old saying 'never say never' has proved to be valid one more time.

All started when I began working on *The Flute and the Lute, Vol.1*. It's not easy for me to work on settings of somebody else's works without being somehow inspired to make new pieces. This never-ending fever lingered on when I started working on *The Flute and the Lute, Vol.2* and grew even stronger when I decided to revisit some old pieces of my own that I had previously considered not worth publishing.

With some rework here and there, those pieces became much more presentable and they appear beautiful to me now. The six dances, the prelude, Duo N.12 and the song 'Un Somni (A Dream)' belong to this group of pieces. The four fantasies, the 'Complaint' song, the 'Love Song' and Duo N.11 are new. As an appendix, I have also added six settings of fantasies from previous books arranged for two lutes.

Minor mistakes have been corrected for this second edition, the most important one being a bass erased on the first chord of bars 7 & 15 of the *Love Song*.

I hope you enjoy it.

Joaquim Bogunyà Chesa, September 2020



Contents

Page

Duos & Fantasies

1. Fantasia No. 25	5
2. Duo No. 11	8
3. Duo No. 12	9
4. Fantasia No. 26	10
5. Fantasia No. 27	12
6. Preludi	13
7. Fantasia No. 28	14

Dances

8. Petita Allemande	15
9. Jig	16
10. Dansa Alegre No. 2	18
11. Echo Dance	19
12. Dansa Trista	20
13. Dansa Alegre No. 3	22

Songs

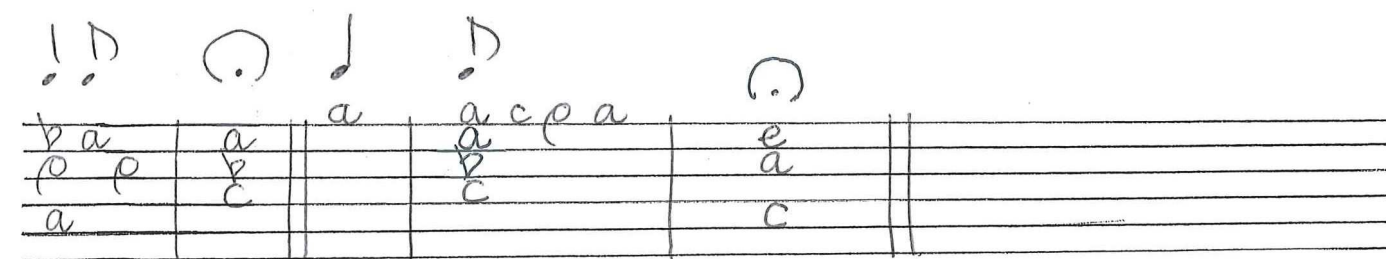
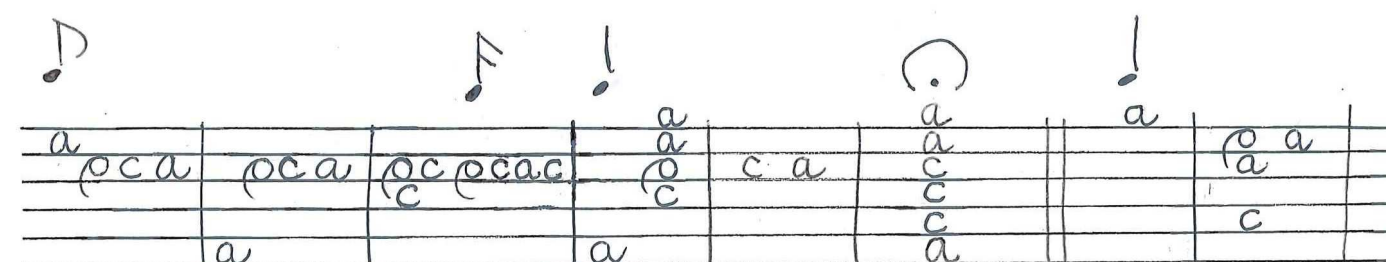
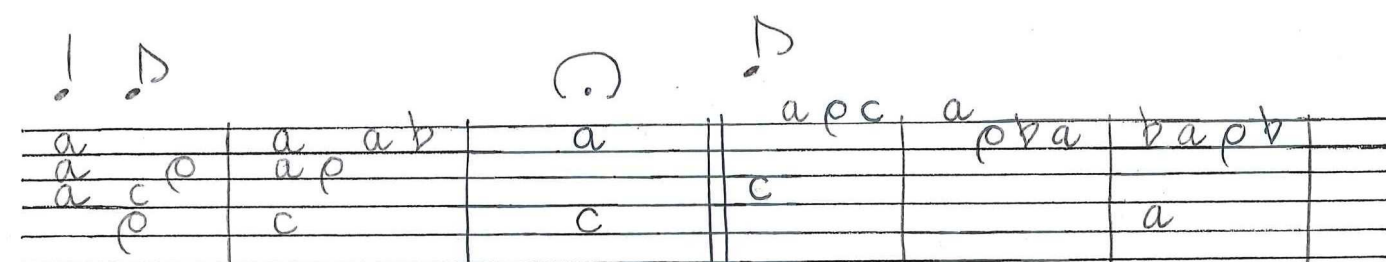
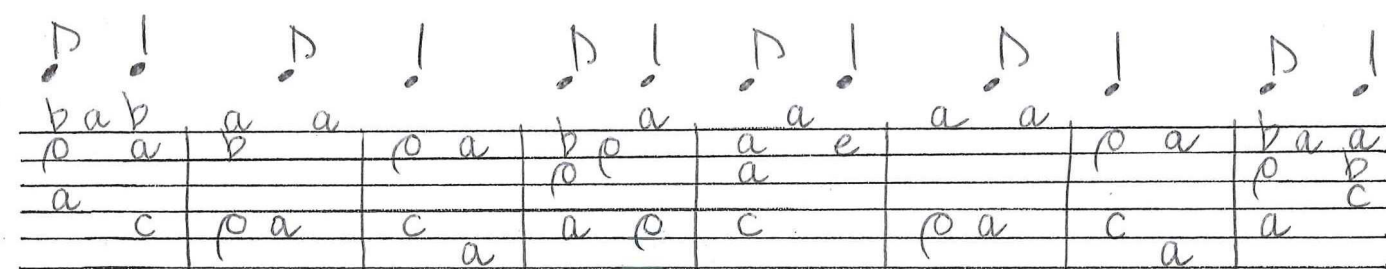
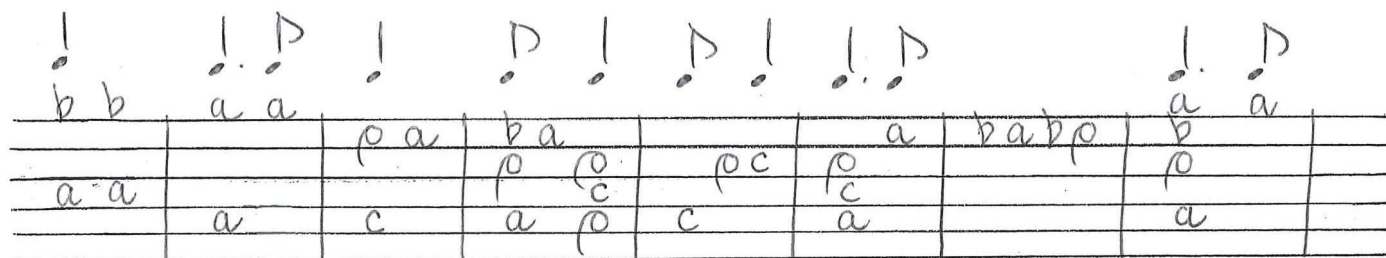
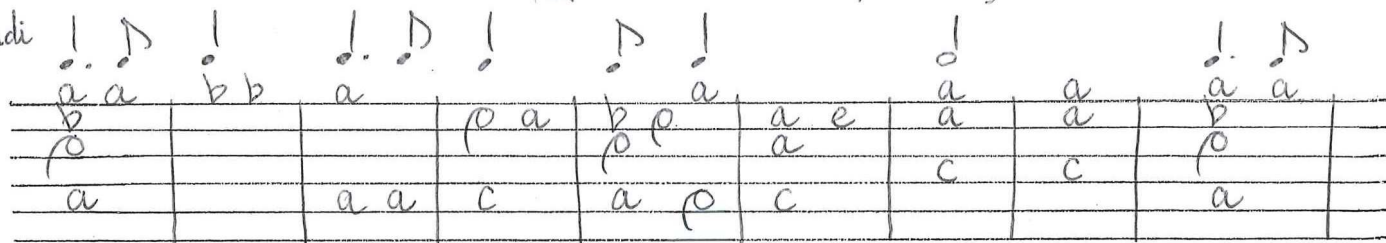
14. Complaint	24
15. Un Somni (A Dream)	25
16. Cançó d'Amor (Love Song)	26

Appendix: Settings of Fantasies for two Lutes

17. Fantasia No. 7	27
18. Fantasia No. 10	28
19. Fantasia No. 18	29
20. Fantasia No. 12	30 & 31
21. Fantasia No. 15	30 & 31
22. Fantasia No. 21	32

FANTASIA No 25 (fantasia amb preludi)

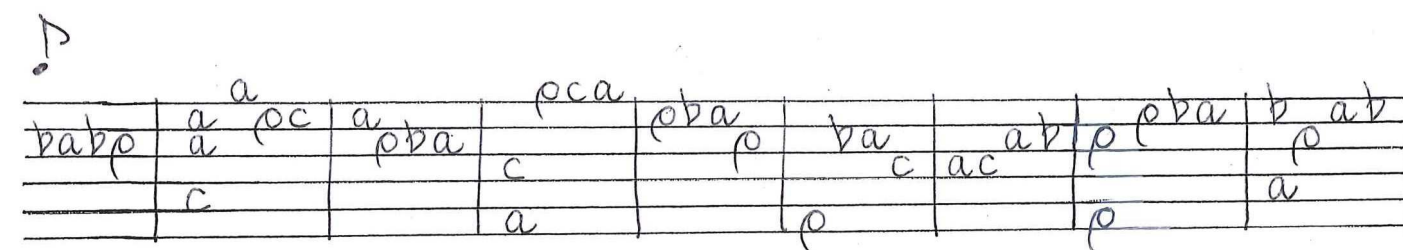
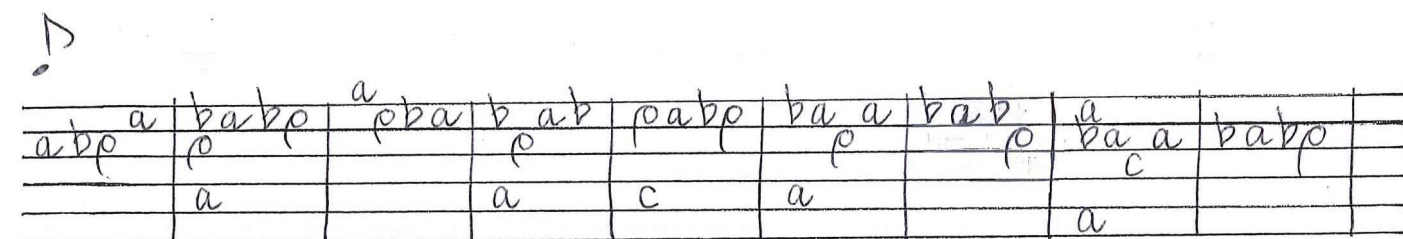
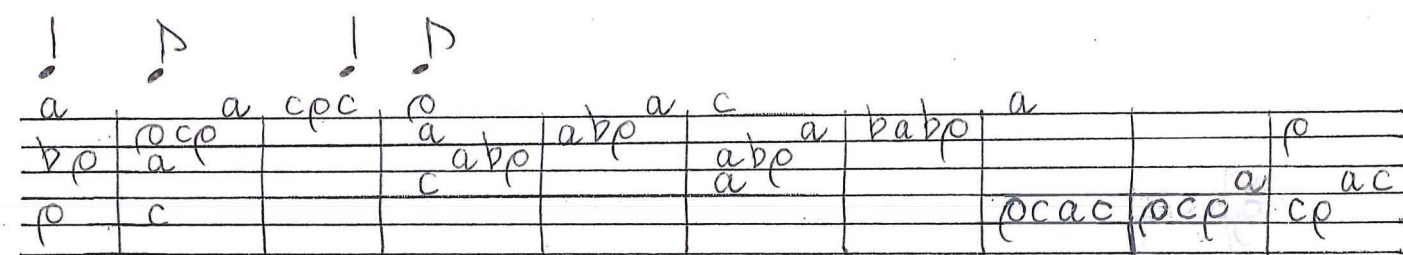
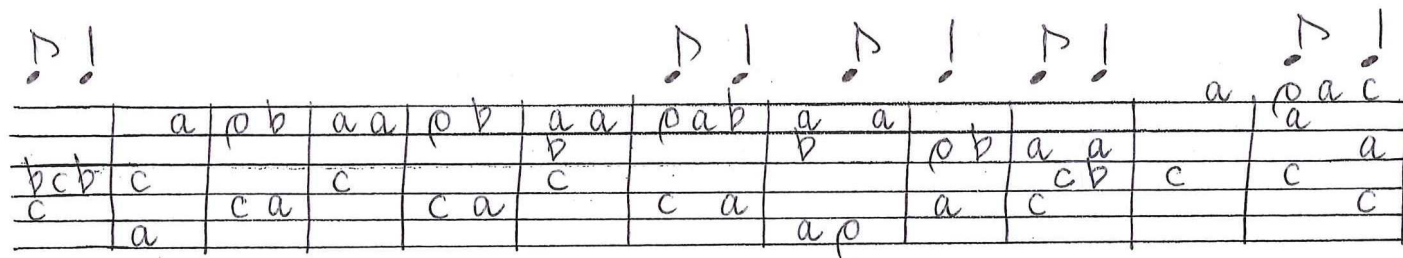
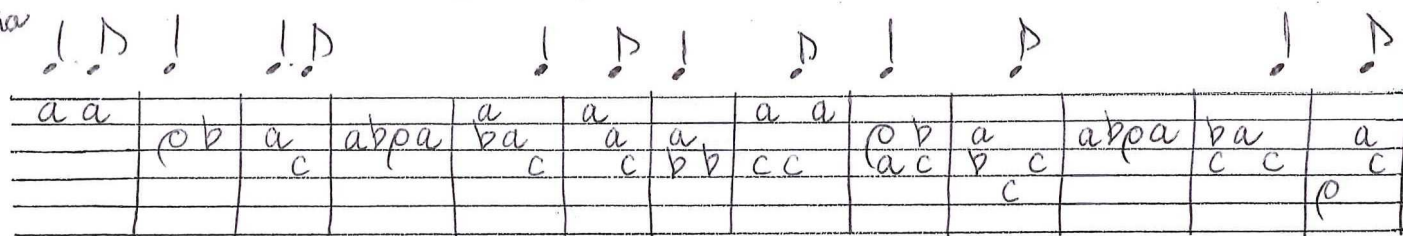
Preludi



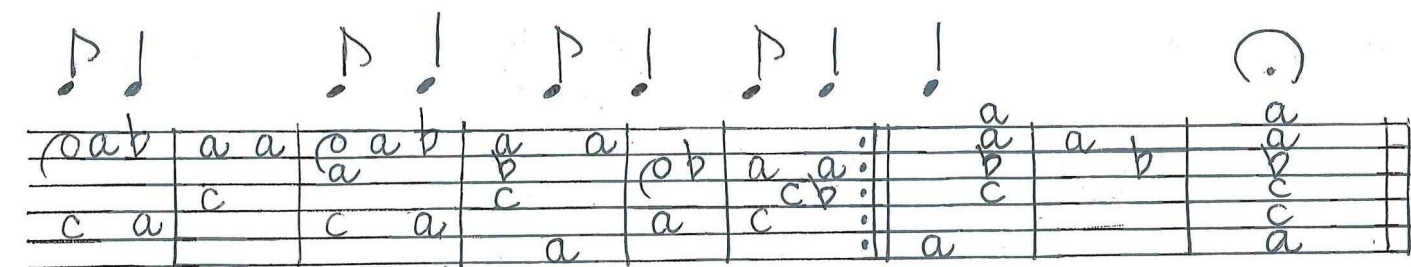
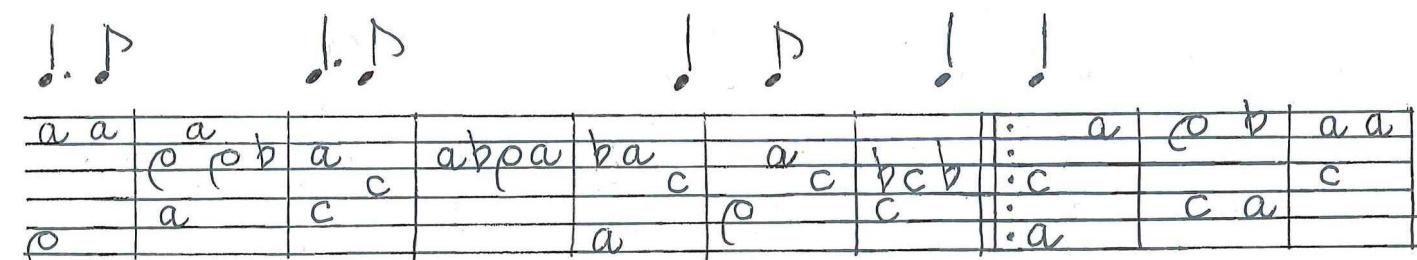
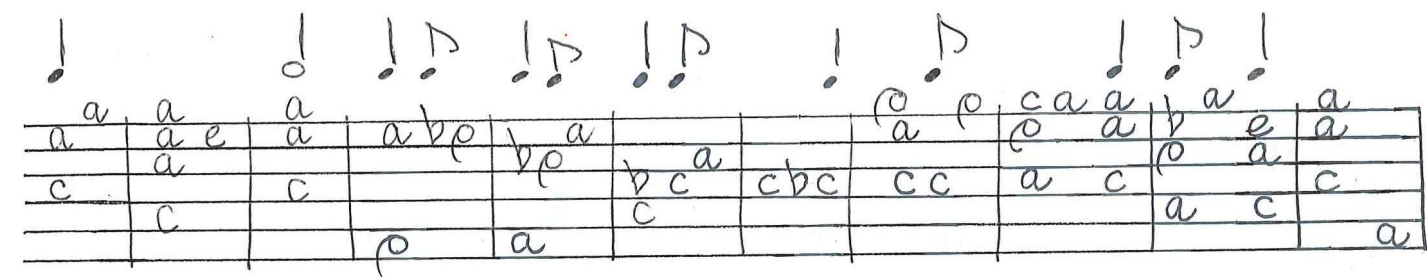
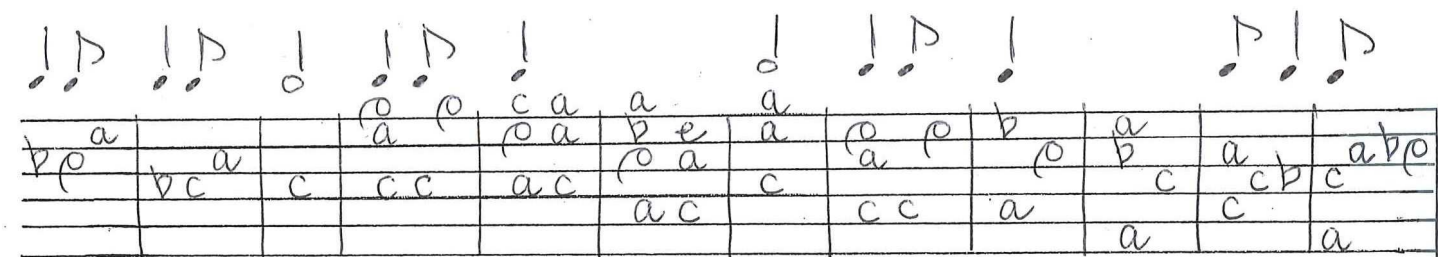
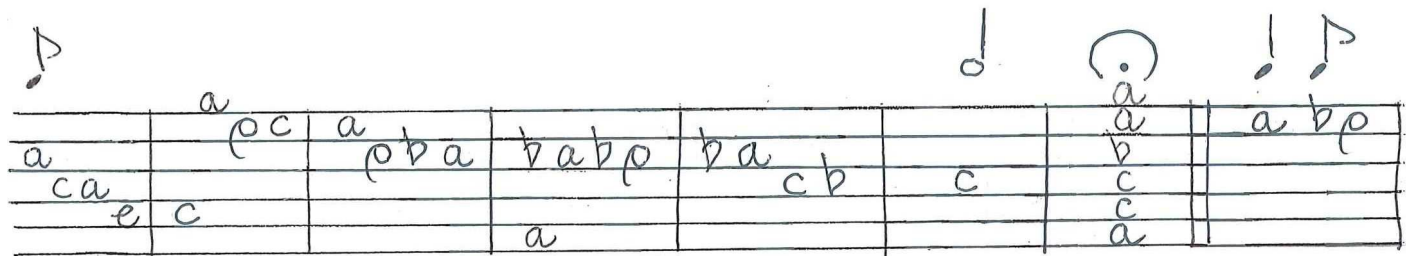
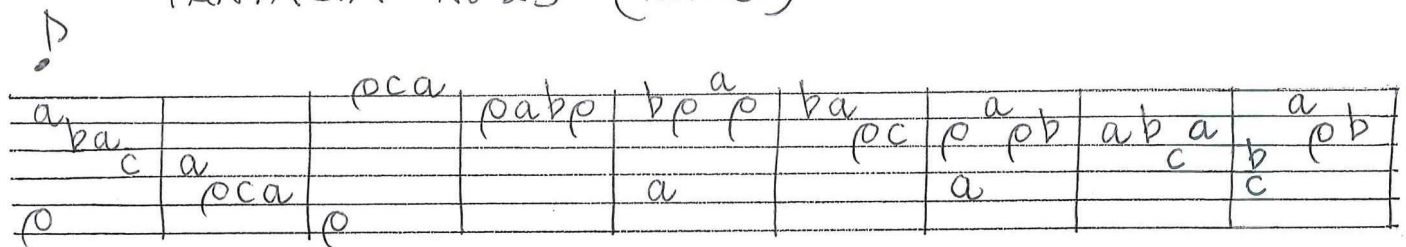
./..

FANTASIA No 25 (cont.)

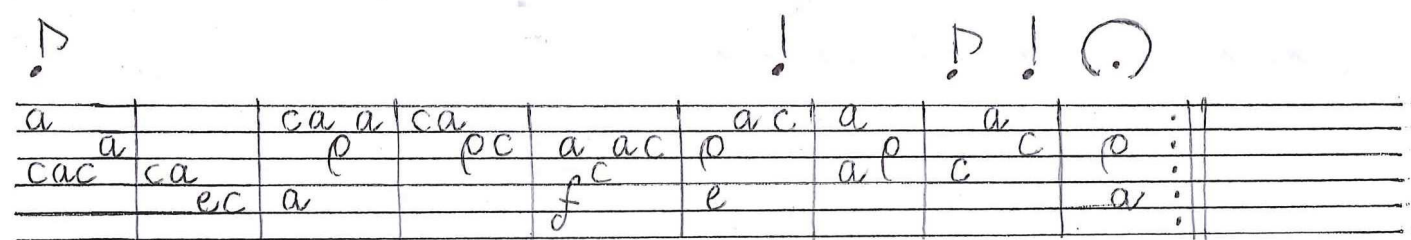
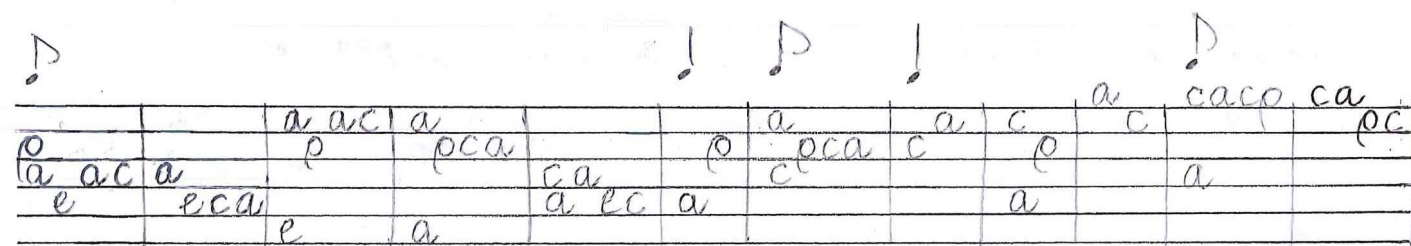
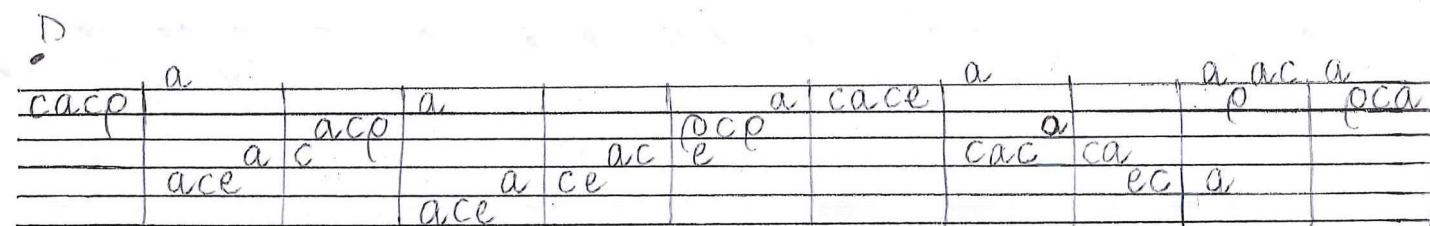
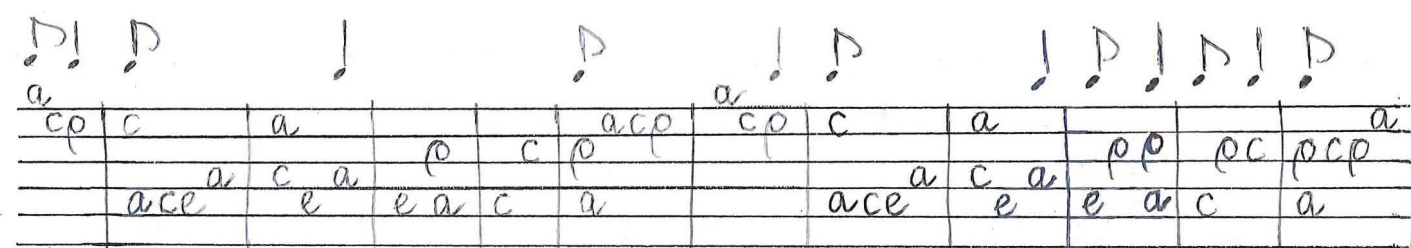
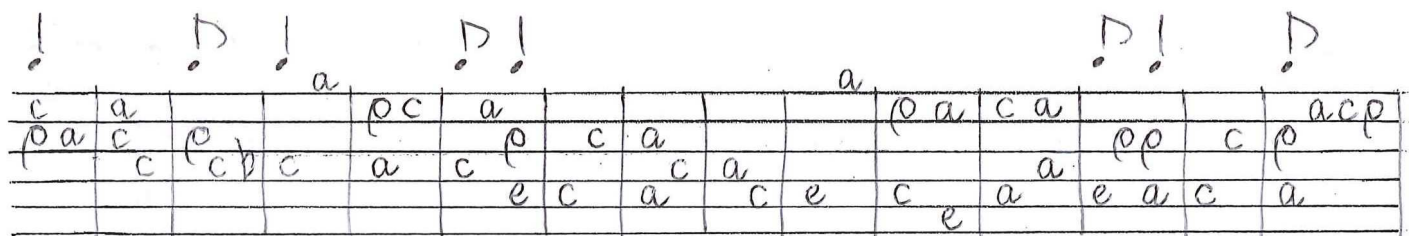
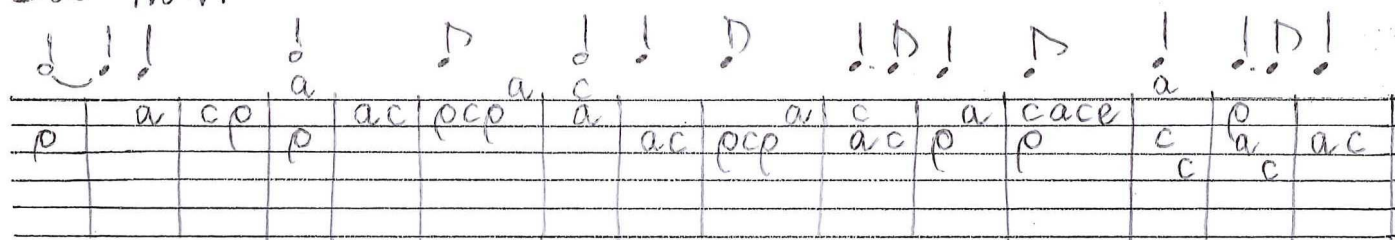
Fantasia



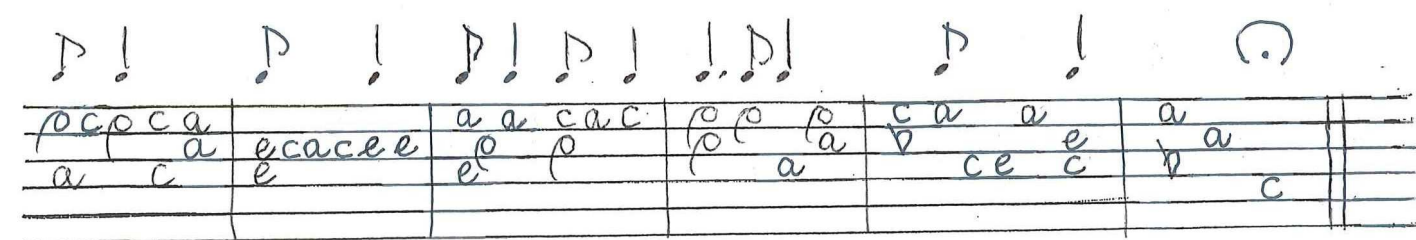
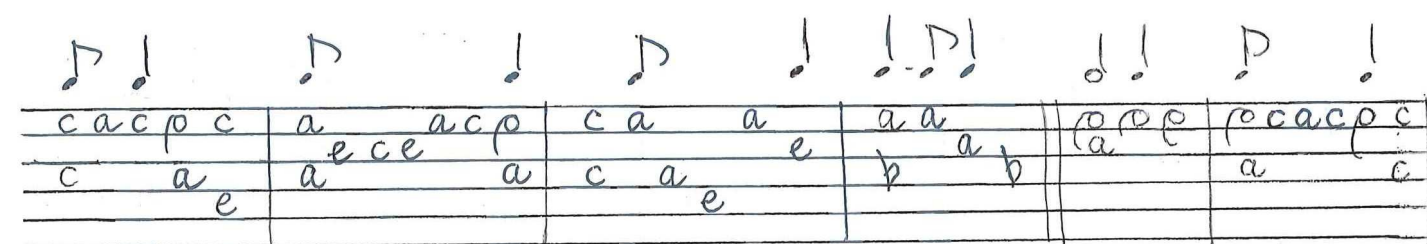
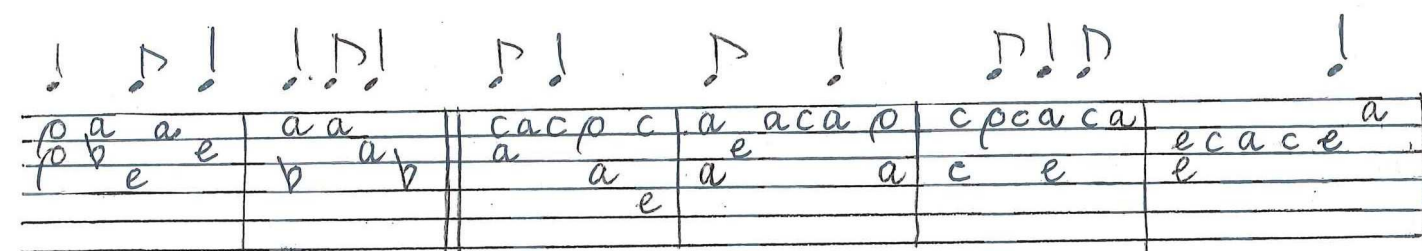
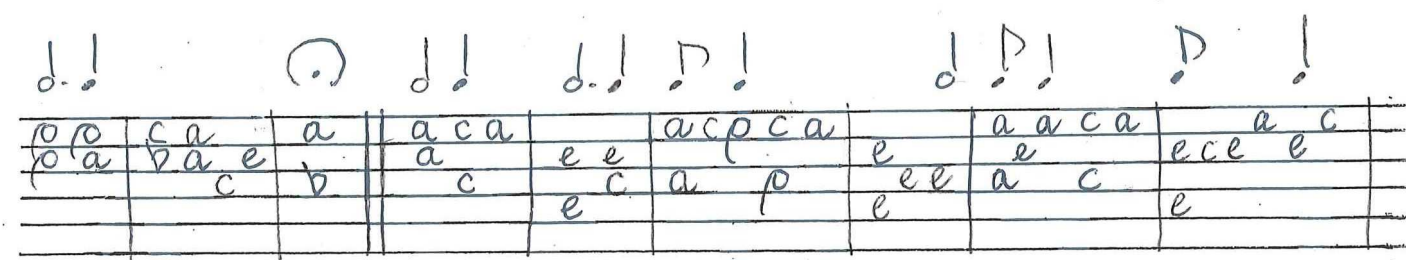
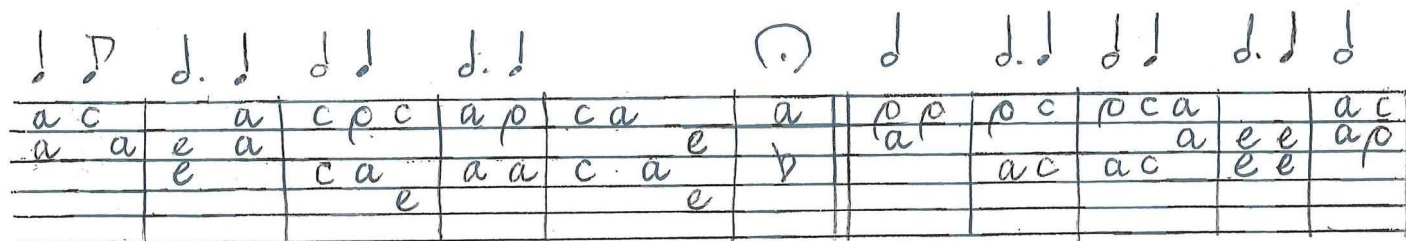
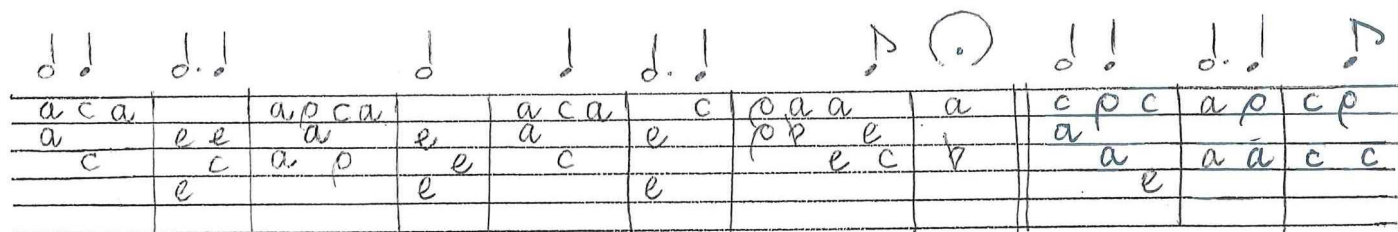
FANTASIA No 25 (cond.)



Duo No 11



DVO No 12

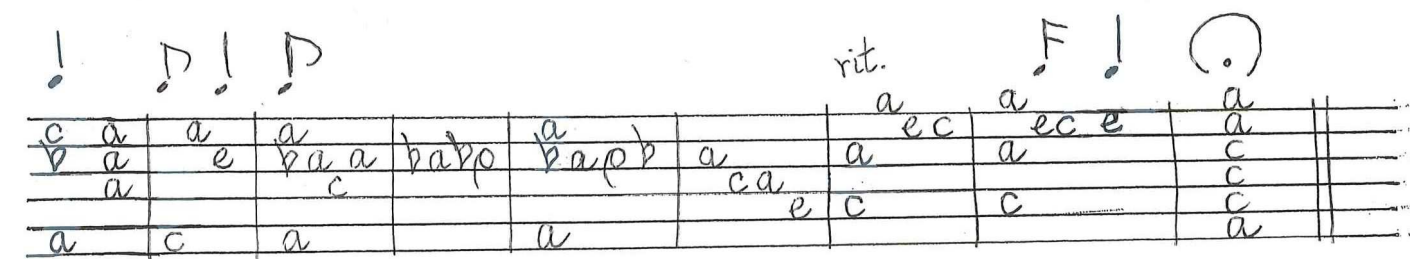
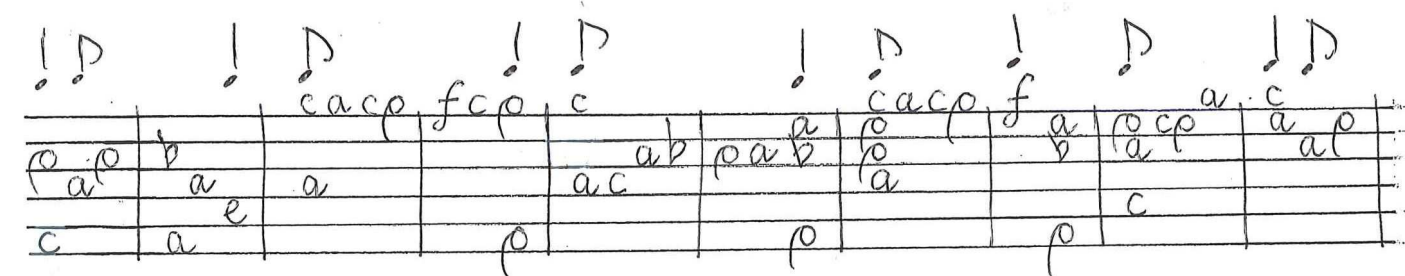
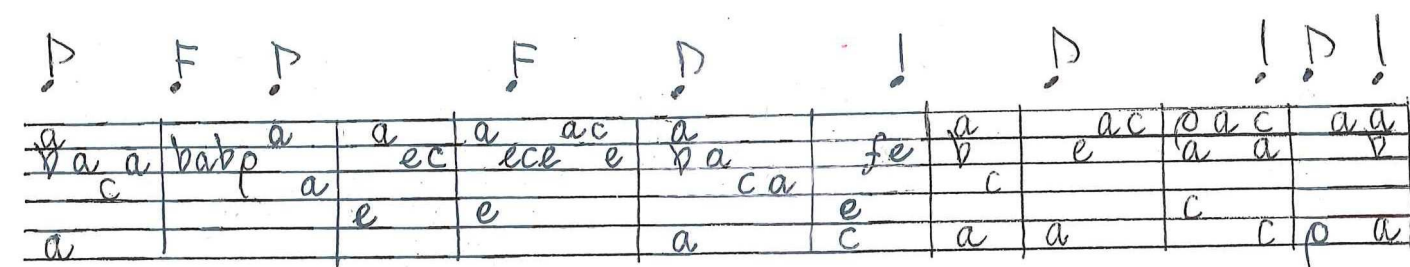
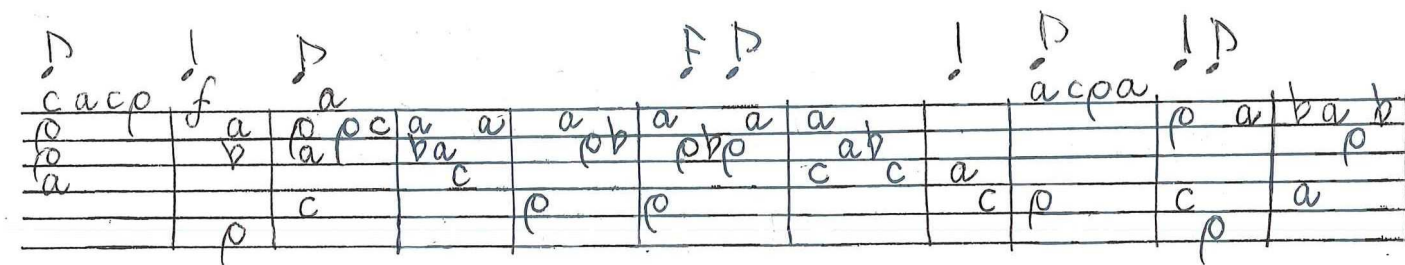
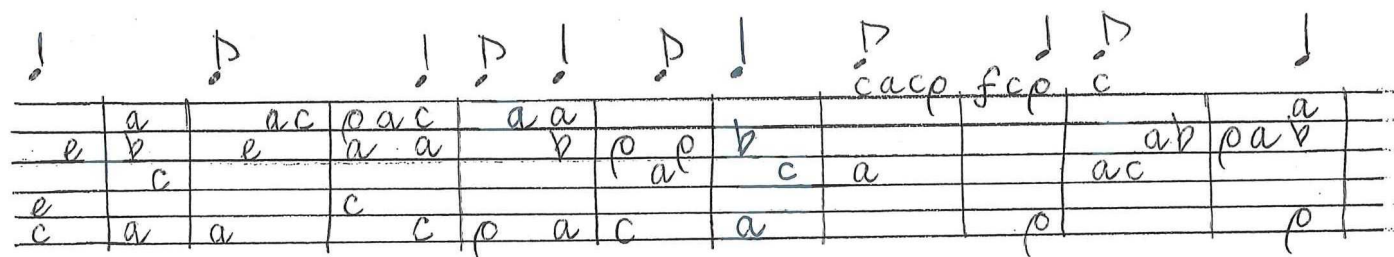
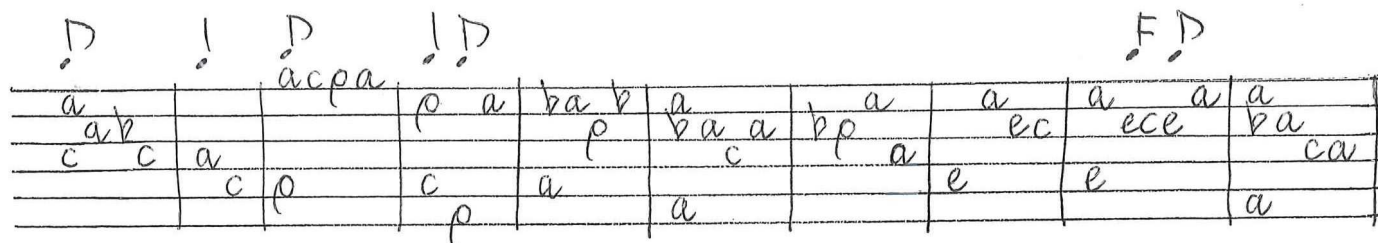


FANTASIA No 26

Molt lent

./...

FANTASIA No 26 (cont.)



FANTASIA No 27

Handwritten musical notation for the first system of Fantasia No 27. The notation is written on a five-line staff with various notes and rests. The notes are labeled with letters: a, b, c, d, e, f, g, h, i, j, k, l, m, n, o, p, q, r, s, t, u, v, w, x, y, z. The staff is divided into measures by vertical lines.

Handwritten musical notation for the second system of Fantasia No 27. The notation is written on a five-line staff with various notes and rests. The notes are labeled with letters: a, b, c, d, e, f, g, h, i, j, k, l, m, n, o, p, q, r, s, t, u, v, w, x, y, z. The staff is divided into measures by vertical lines.

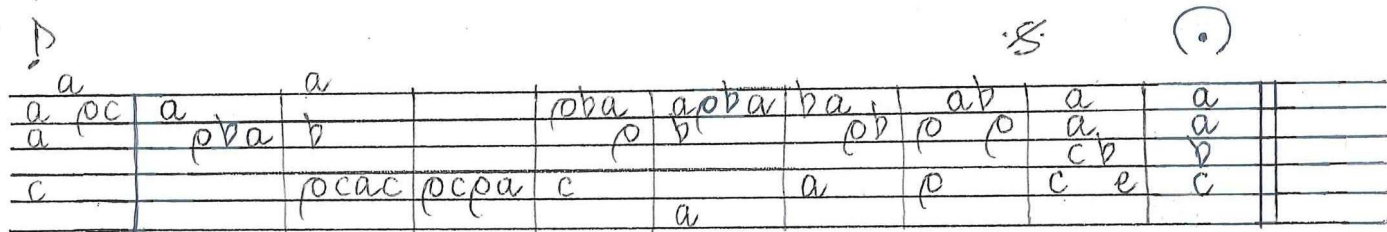
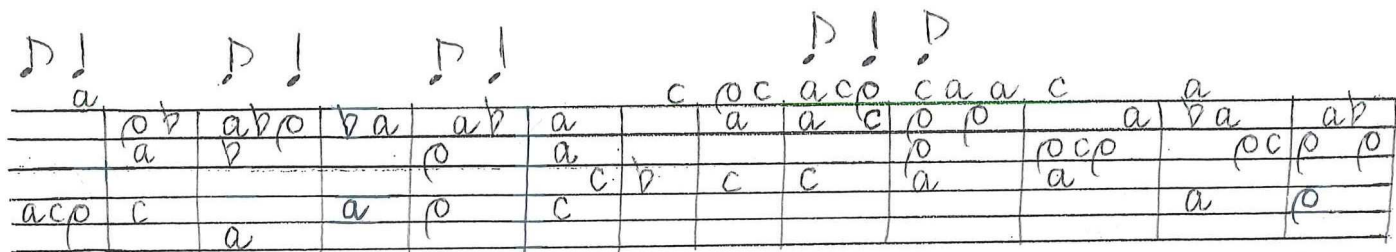
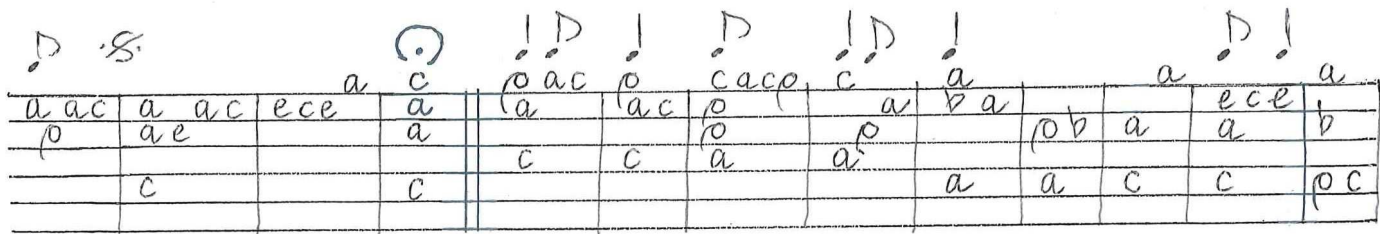
Handwritten musical notation for the third system of Fantasia No 27. The notation is written on a five-line staff with various notes and rests. The notes are labeled with letters: a, b, c, d, e, f, g, h, i, j, k, l, m, n, o, p, q, r, s, t, u, v, w, x, y, z. The staff is divided into measures by vertical lines.

Handwritten musical notation for the fourth system of Fantasia No 27. The notation is written on a five-line staff with various notes and rests. The notes are labeled with letters: a, b, c, d, e, f, g, h, i, j, k, l, m, n, o, p, q, r, s, t, u, v, w, x, y, z. The staff is divided into measures by vertical lines.

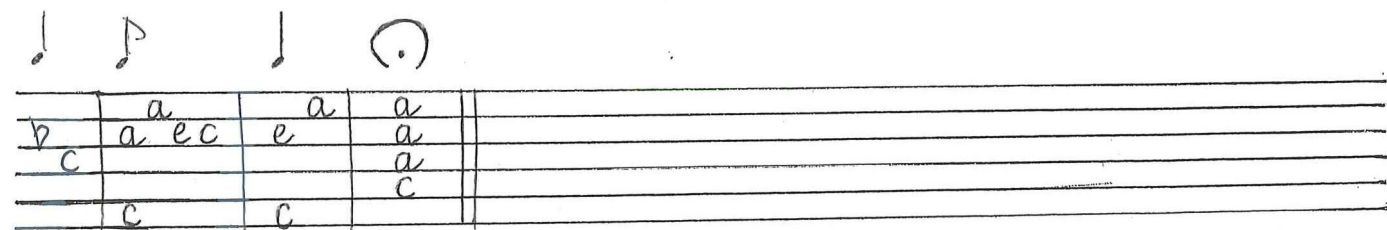
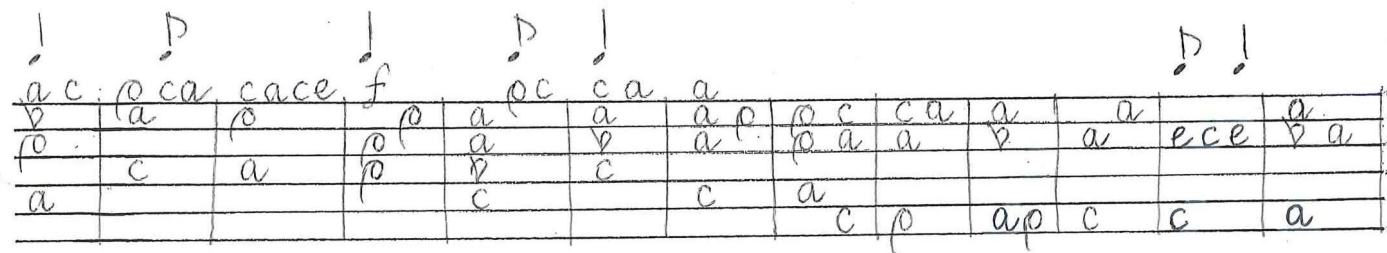
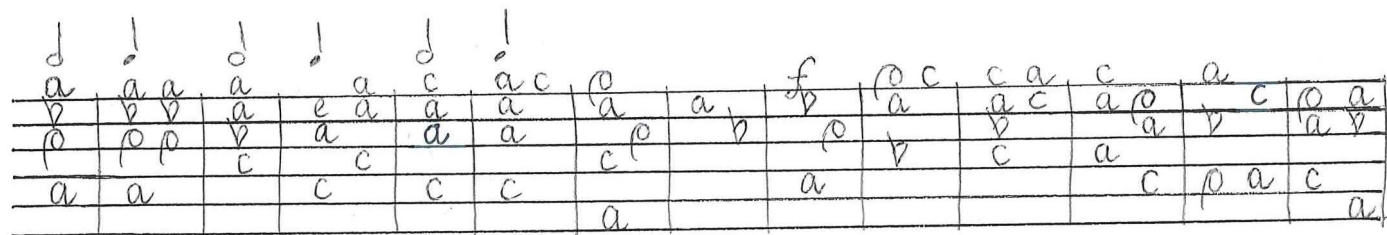
Handwritten musical notation for the fifth system of Fantasia No 27. The notation is written on a five-line staff with various notes and rests. The notes are labeled with letters: a, b, c, d, e, f, g, h, i, j, k, l, m, n, o, p, q, r, s, t, u, v, w, x, y, z. The staff is divided into measures by vertical lines.

Handwritten musical notation for the sixth system of Fantasia No 27. The notation is written on a five-line staff with various notes and rests. The notes are labeled with letters: a, b, c, d, e, f, g, h, i, j, k, l, m, n, o, p, q, r, s, t, u, v, w, x, y, z. The staff is divided into measures by vertical lines.

FANTASIA No 27 (concl.)

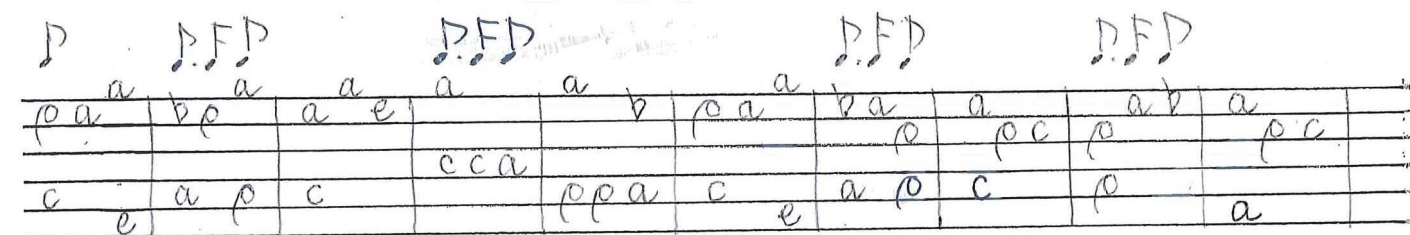
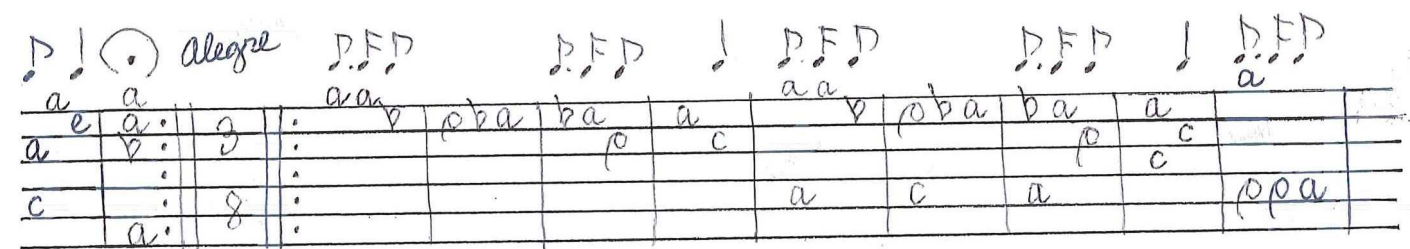
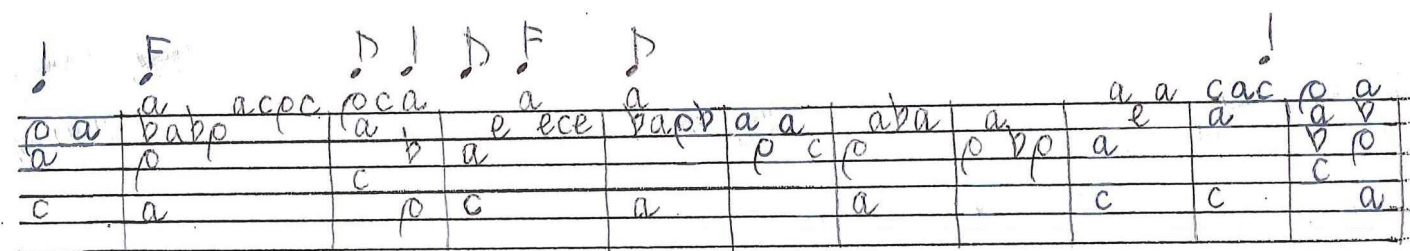
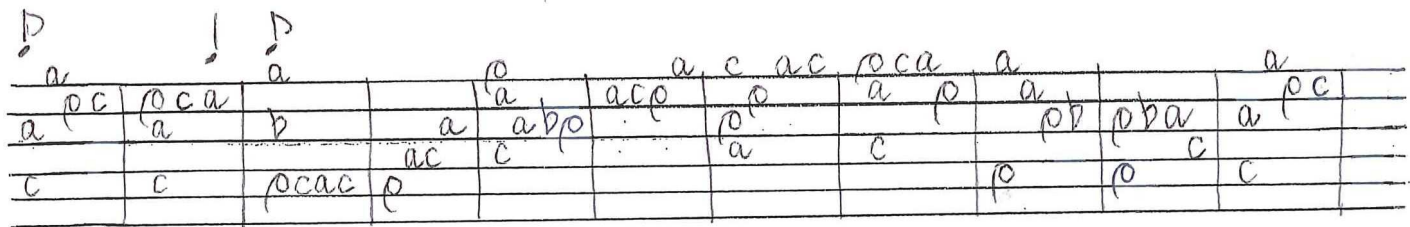
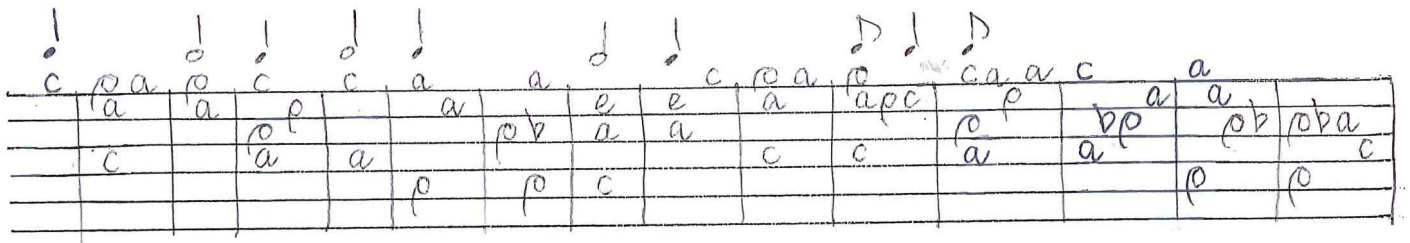


PRELUDI

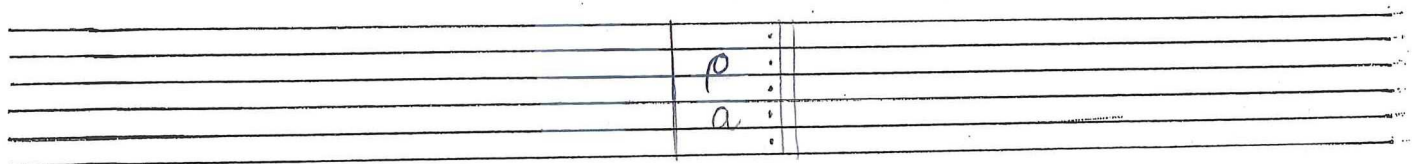


lolt
Lent

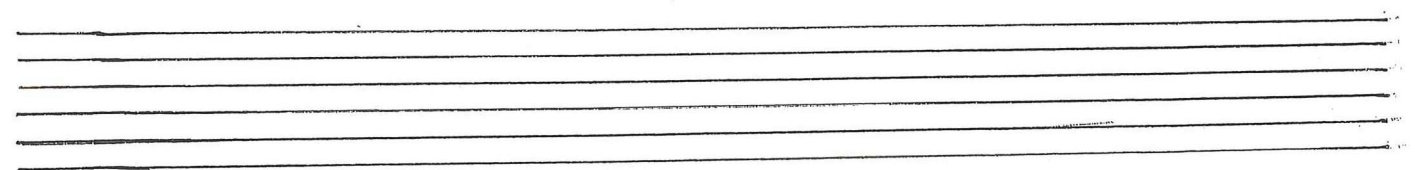
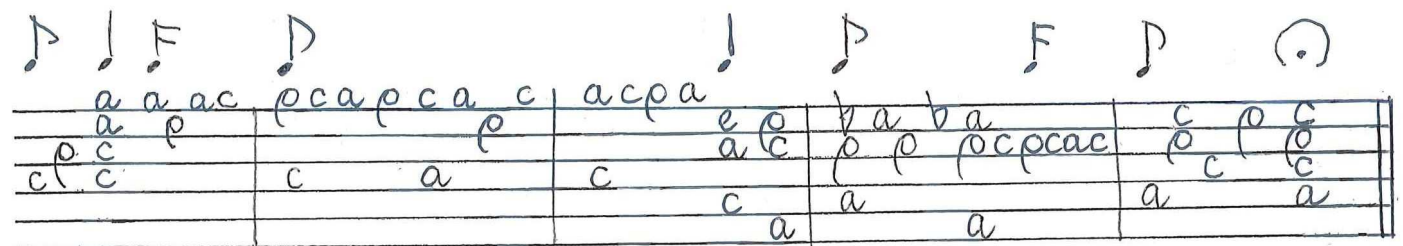
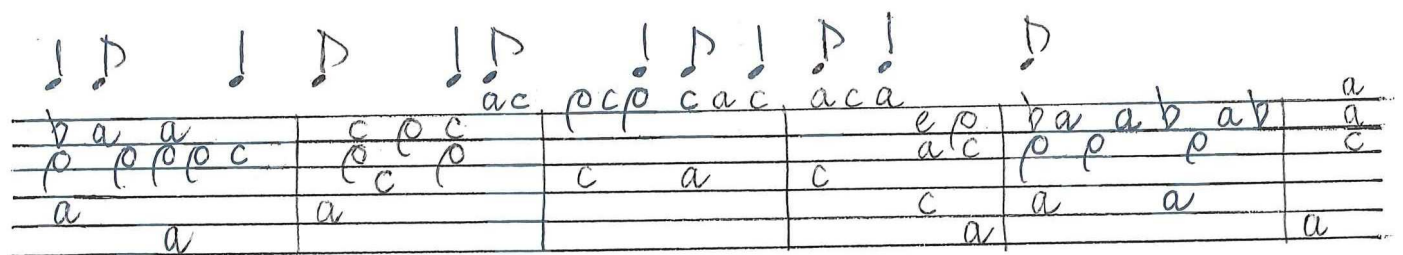
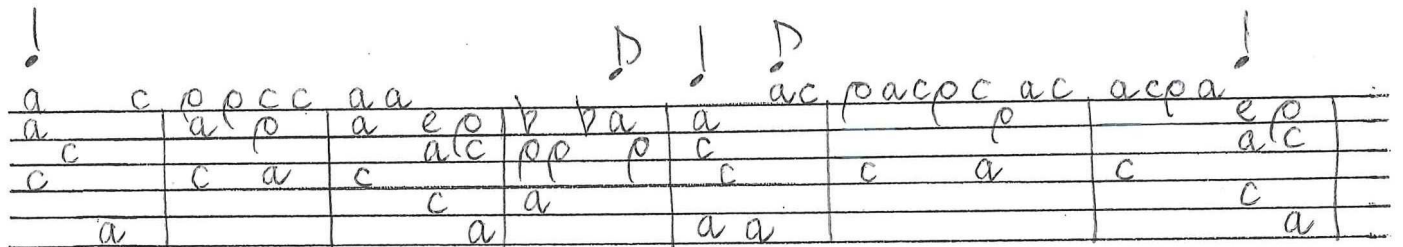
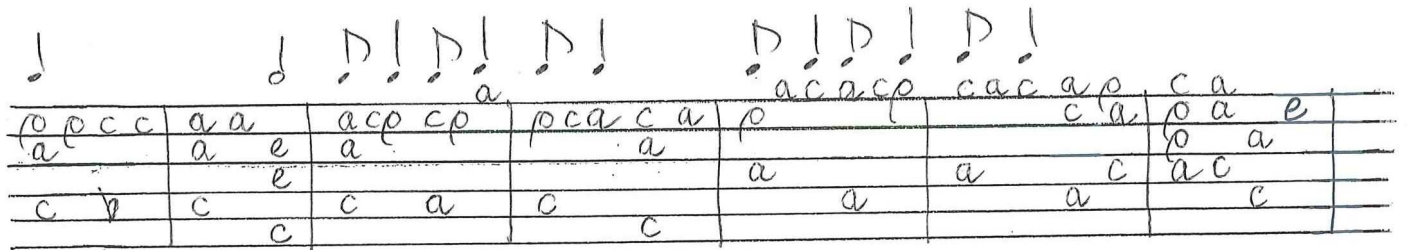
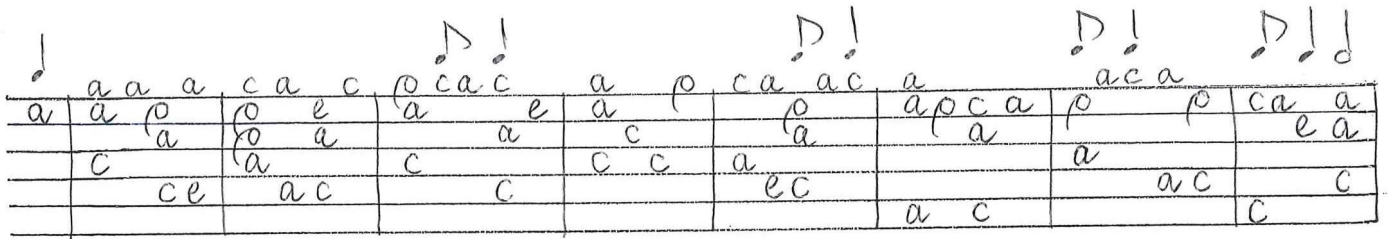
FANTASIA No 28



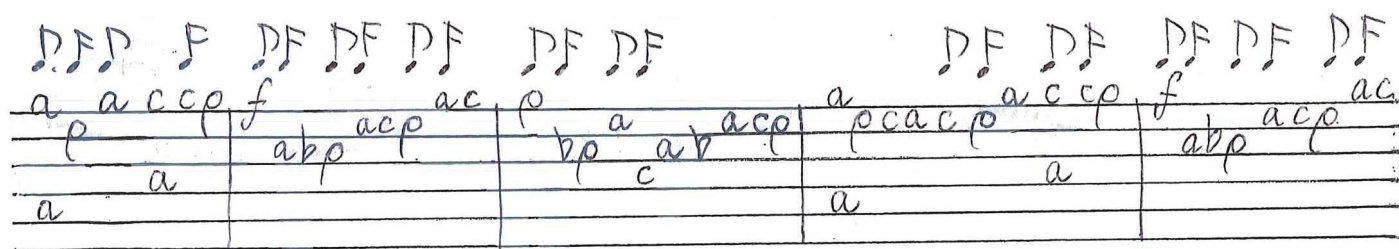
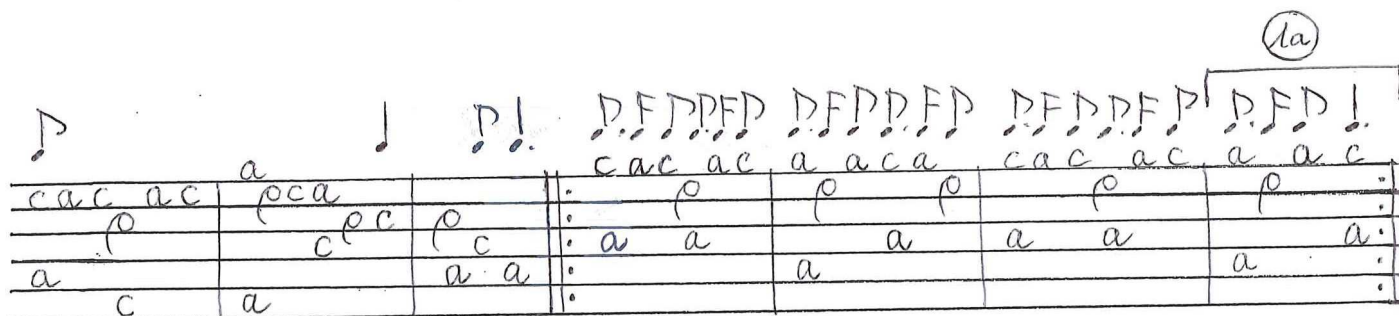
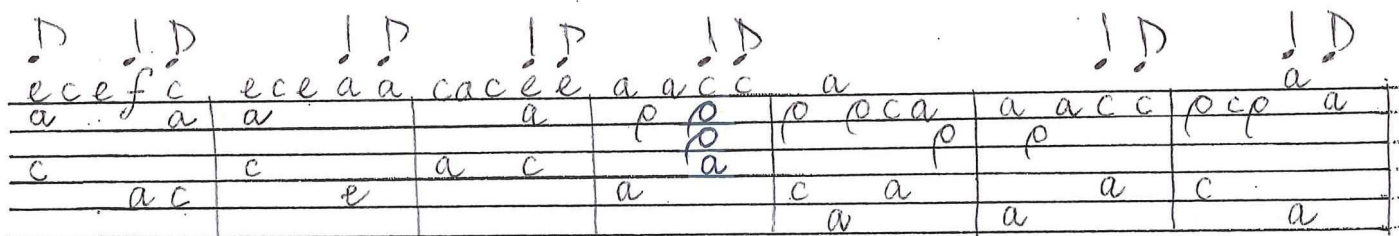
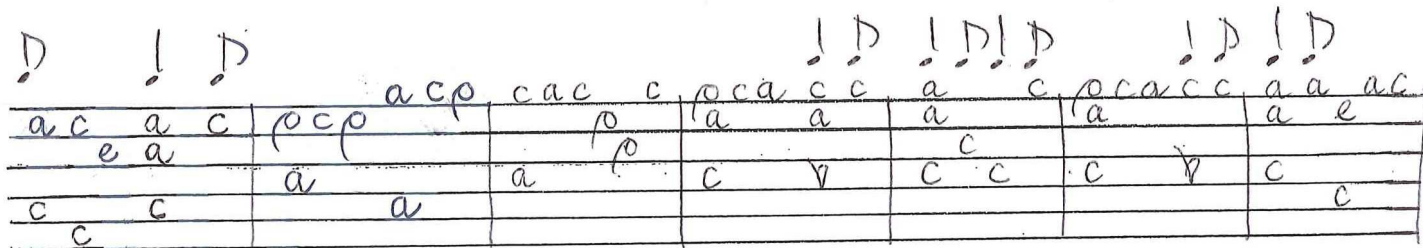
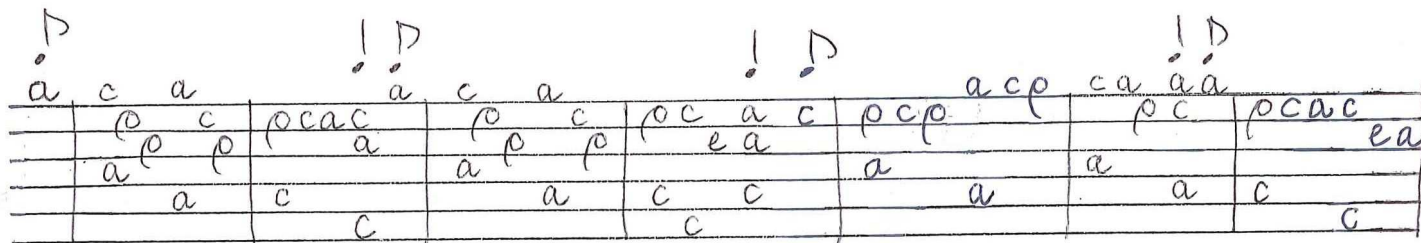
(.)



PETITA ALLEMANDE



Jig



516 (cond.)

Handwritten musical notation for the first system. It consists of three staves. The top staff has a treble clef and a key signature of one flat (B-flat). The notation includes various notes (quarter, eighth, and sixteenth notes) and rests. The bottom two staves appear to be a bass line or a second voice part, with notes and rests corresponding to the top staff. The notation is written in a cursive, handwritten style.

Handwritten musical notation for the second system. It consists of three staves. The notation continues from the first system, with similar note values and rests. The handwriting is consistent with the first system.

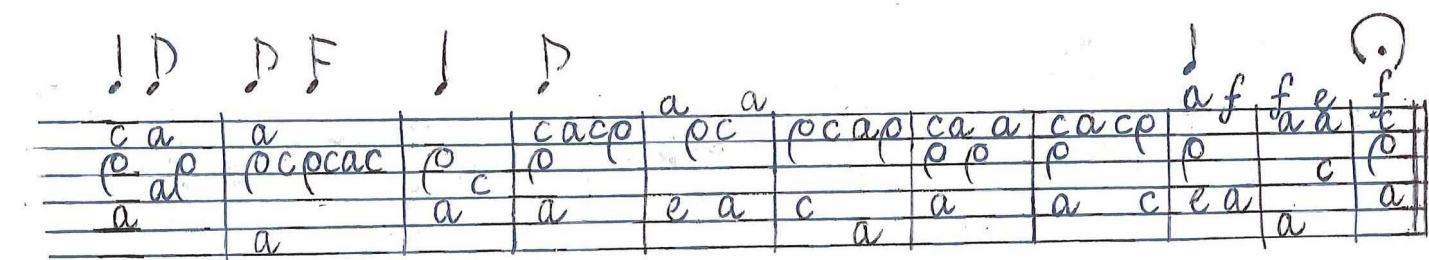
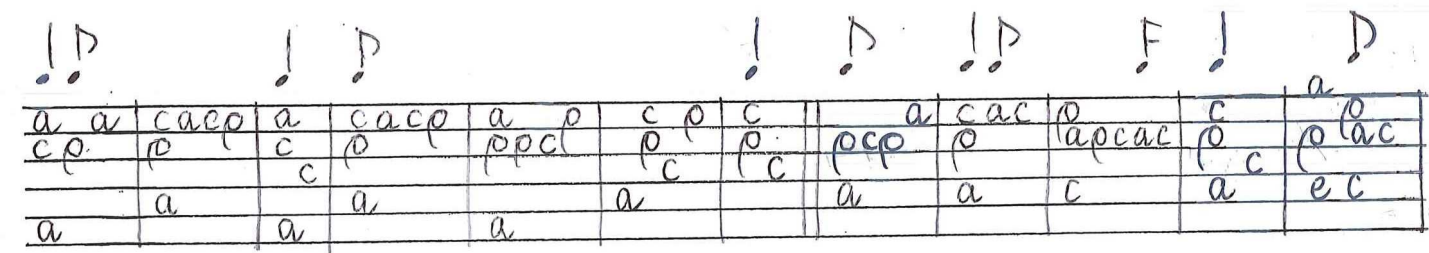
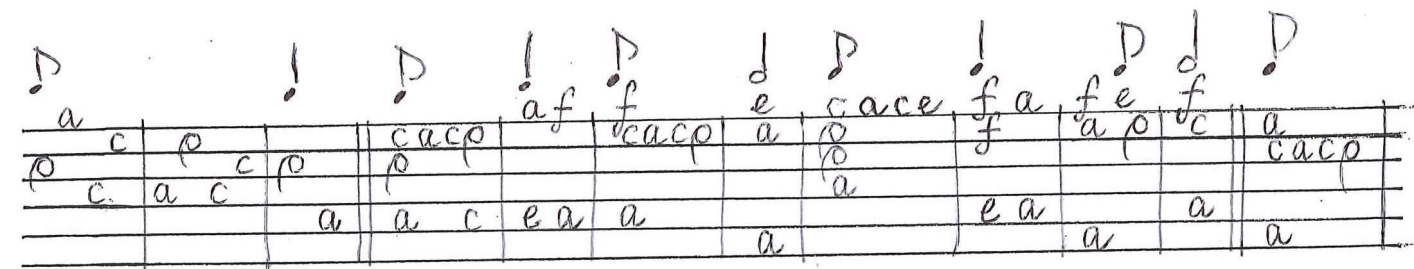
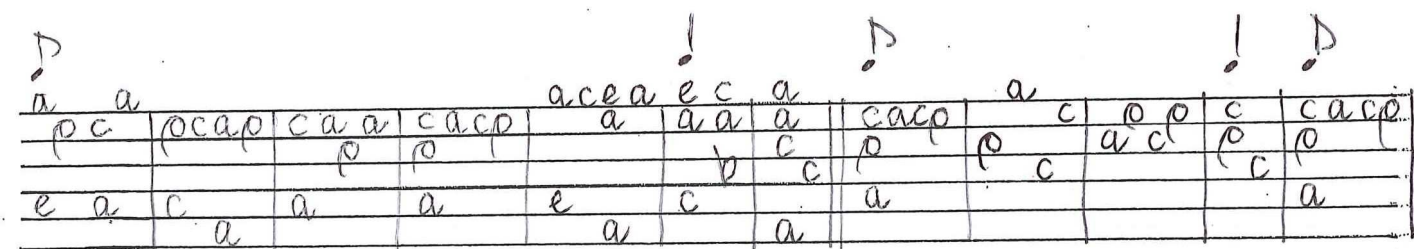
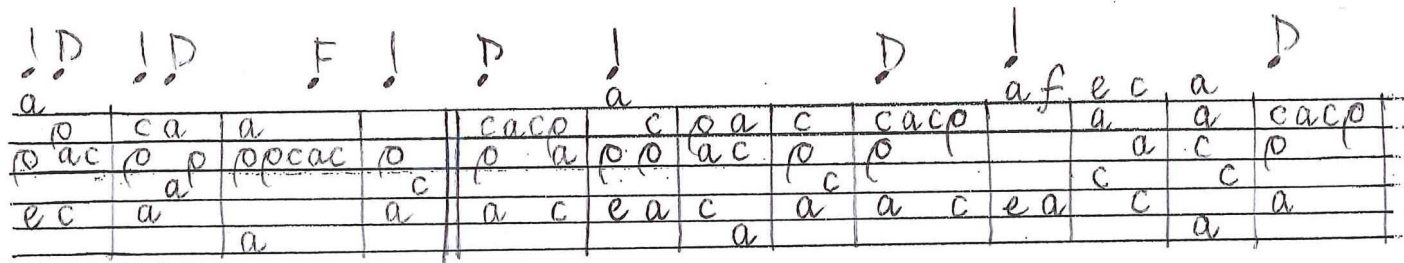
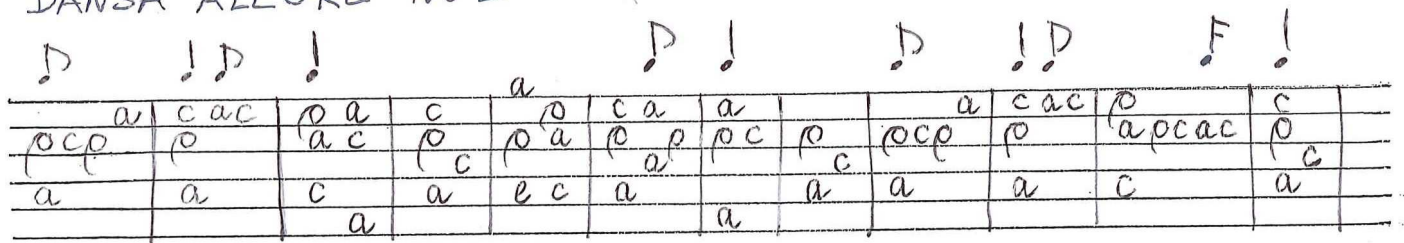
Handwritten musical notation for the third system. It consists of three staves. The notation continues from the second system, with similar note values and rests. The handwriting is consistent with the previous systems.

Handwritten musical notation for the fourth system. It consists of three staves. The notation continues from the third system, with similar note values and rests. The handwriting is consistent with the previous systems.

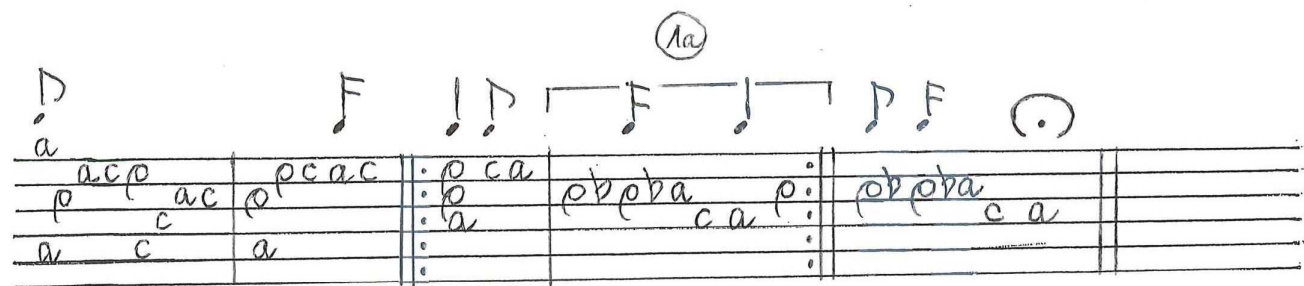
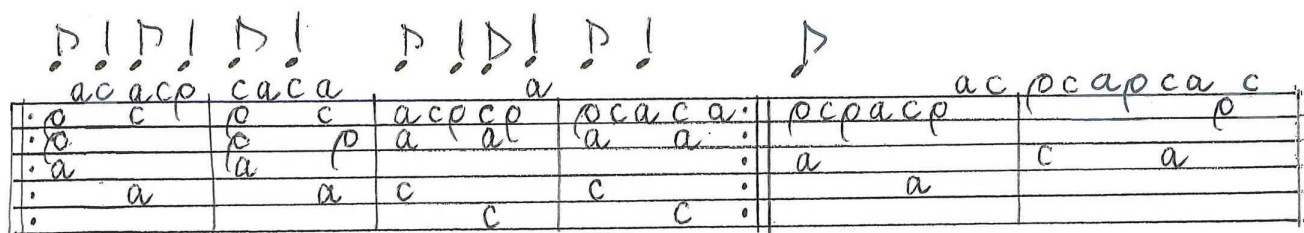
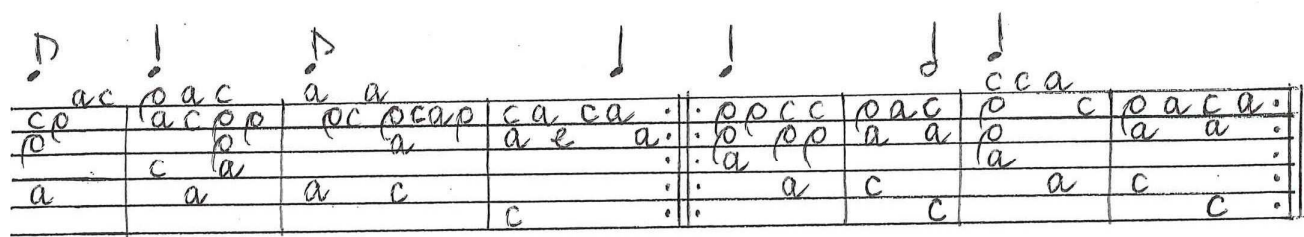
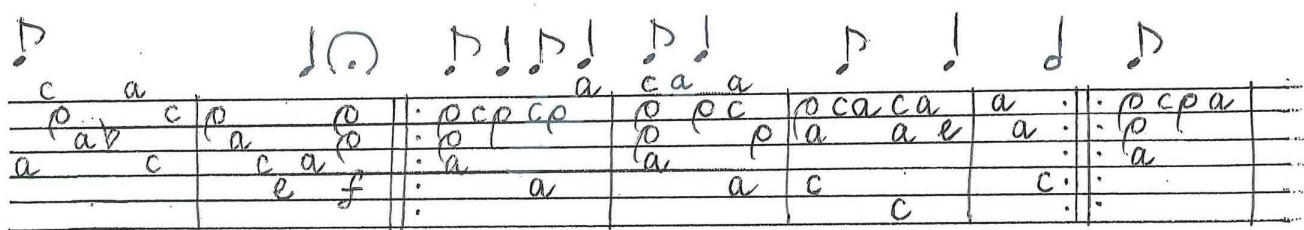
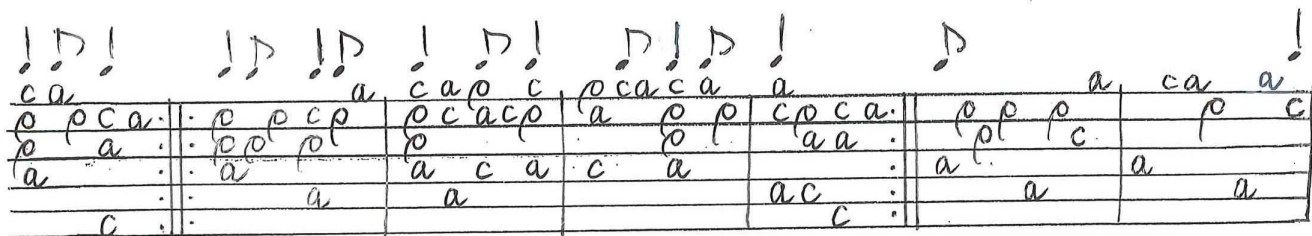
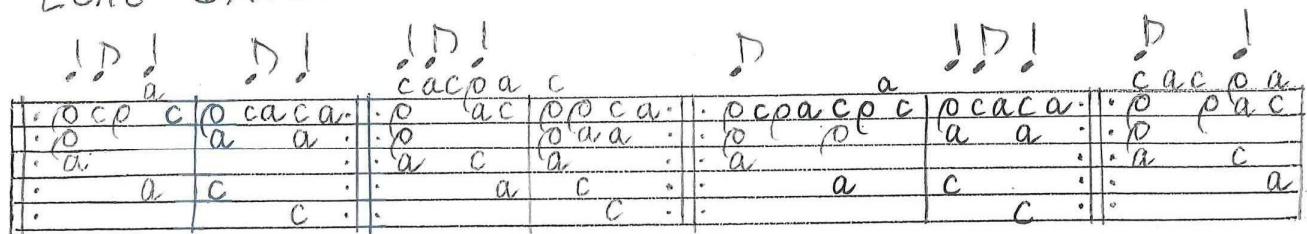
Handwritten musical notation for the fifth system. It consists of three staves. The notation continues from the fourth system, with similar note values and rests. The handwriting is consistent with the previous systems.

Handwritten musical notation for the sixth system. It consists of three staves. The notation continues from the fifth system, with similar note values and rests. The handwriting is consistent with the previous systems.

DANSA ALEGRE No 2

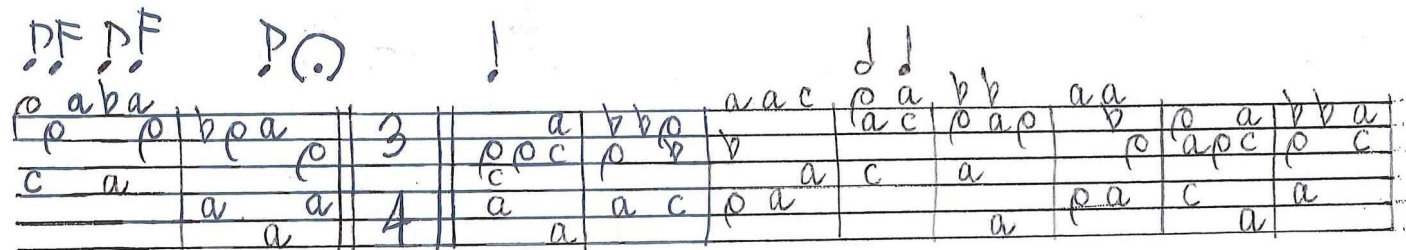
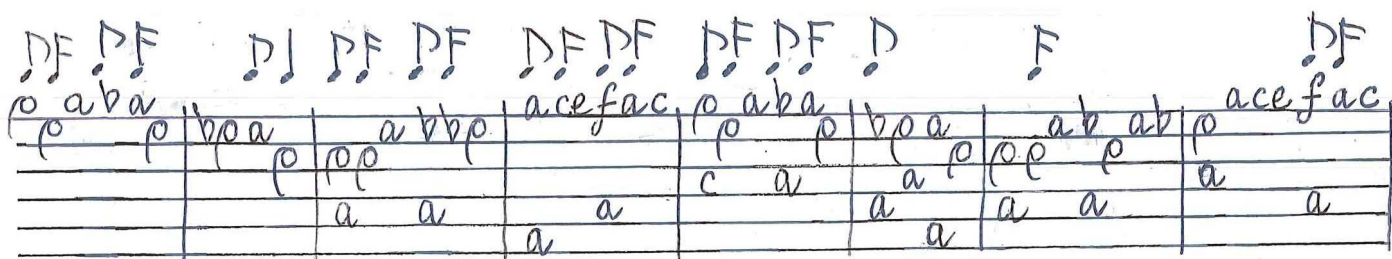
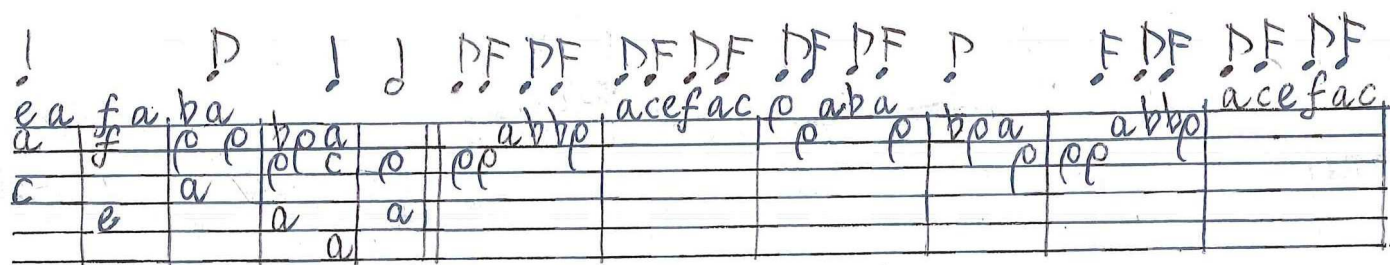
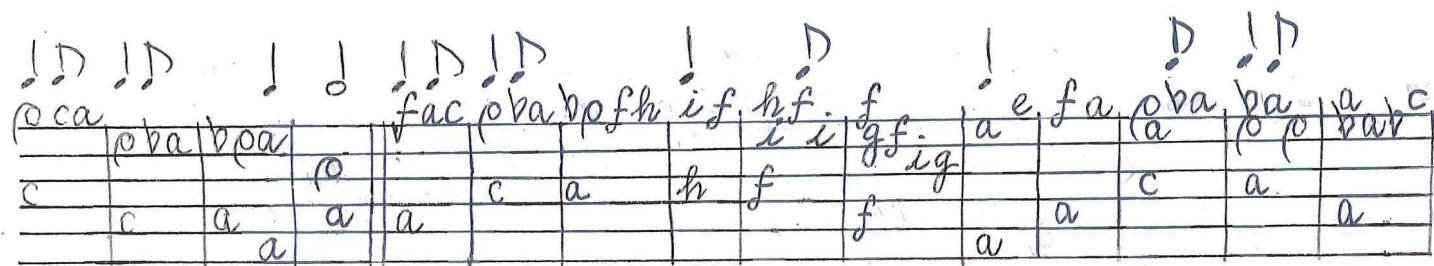
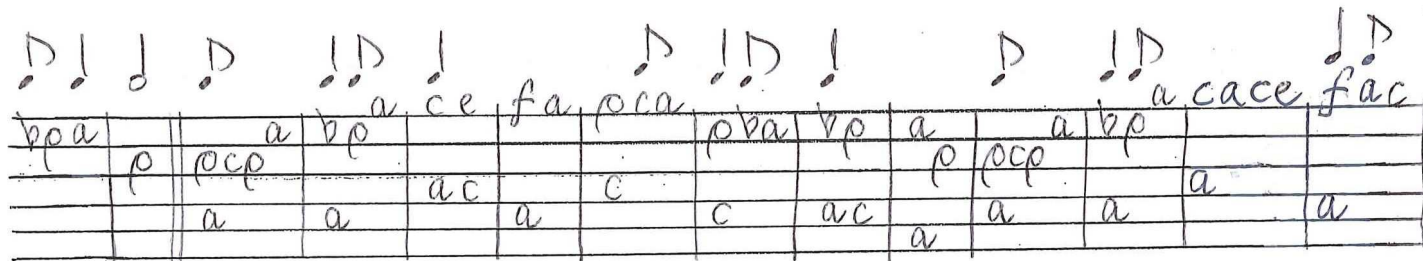
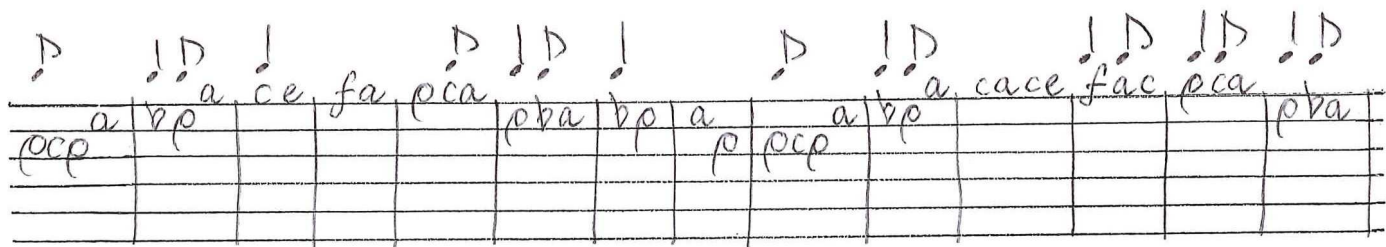


ECHO DANCE *

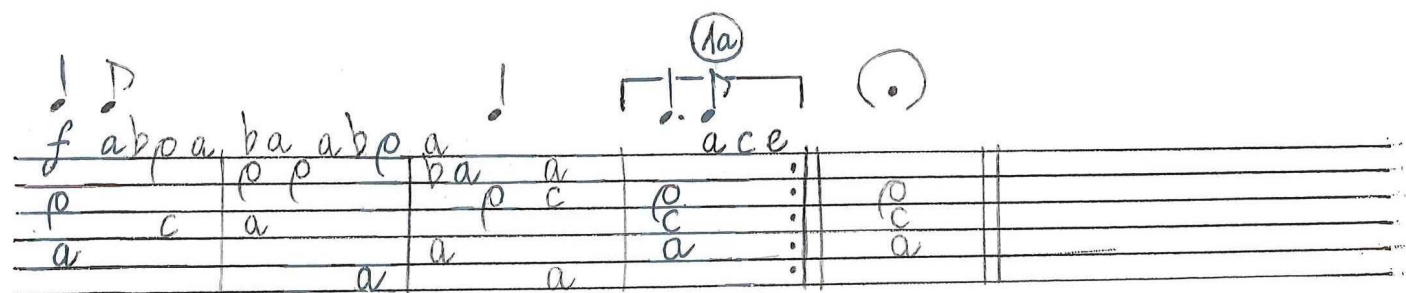
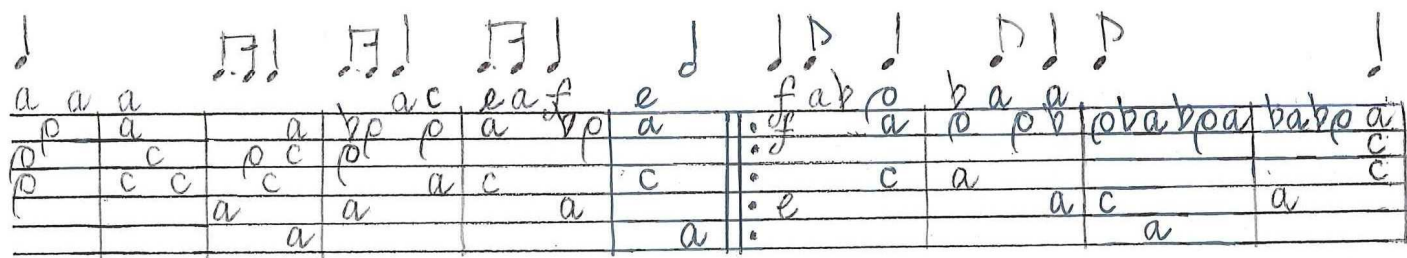
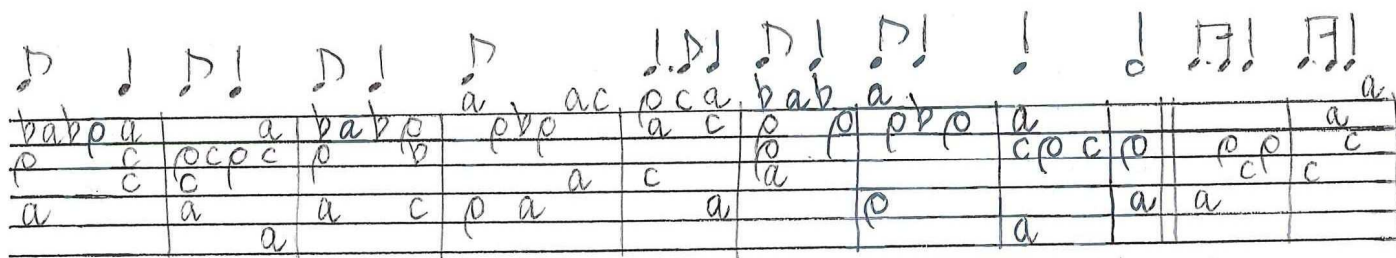
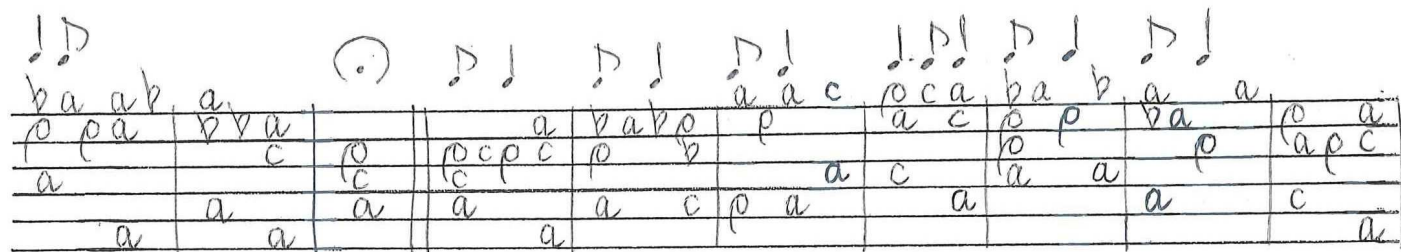
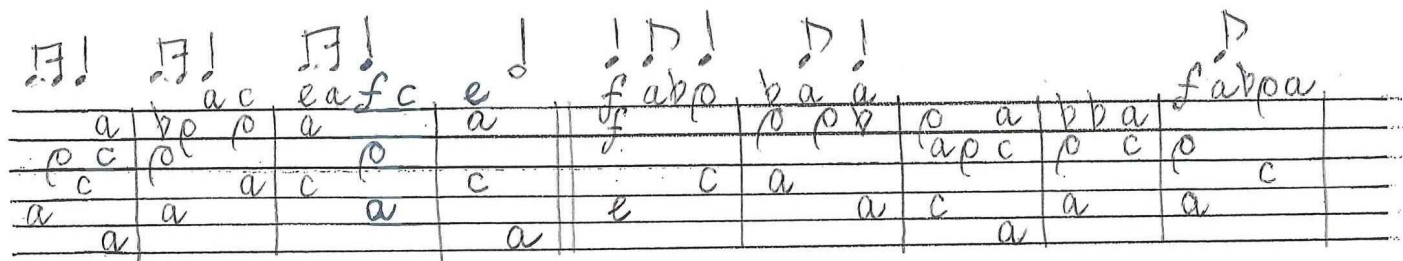
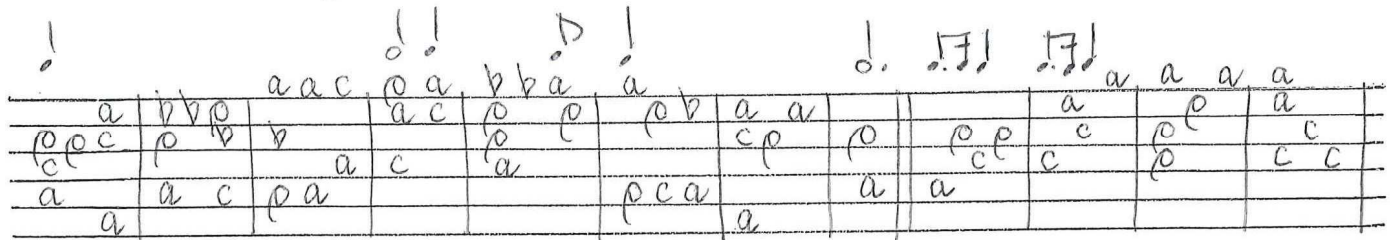


* In order to create the echo effect, the lutenist should play all repetitions piano, or even better pianissimo.

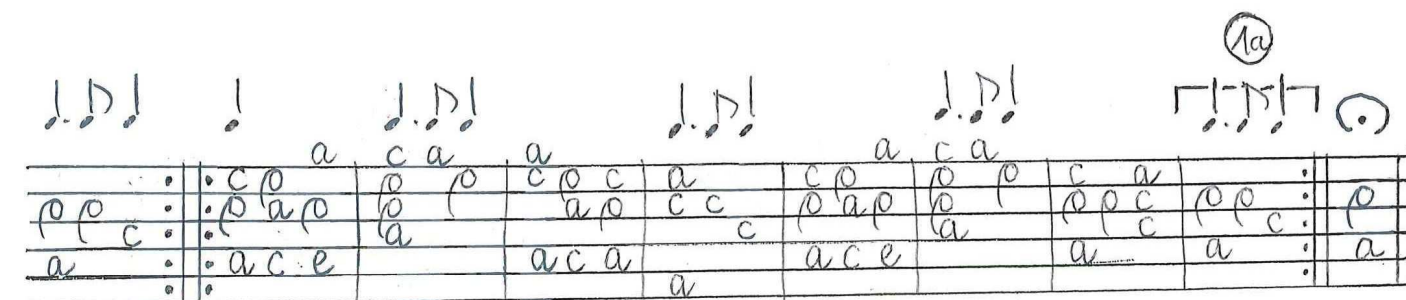
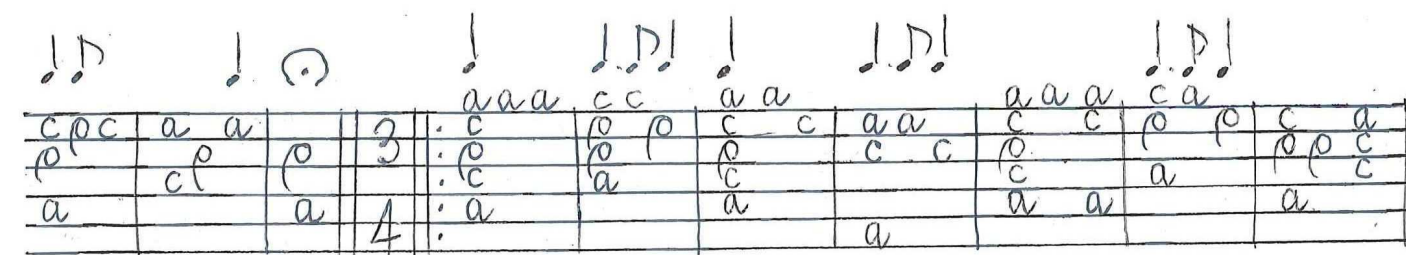
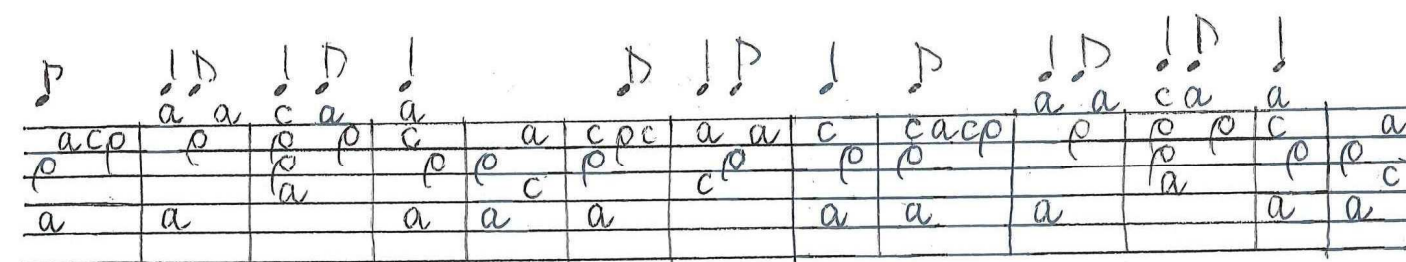
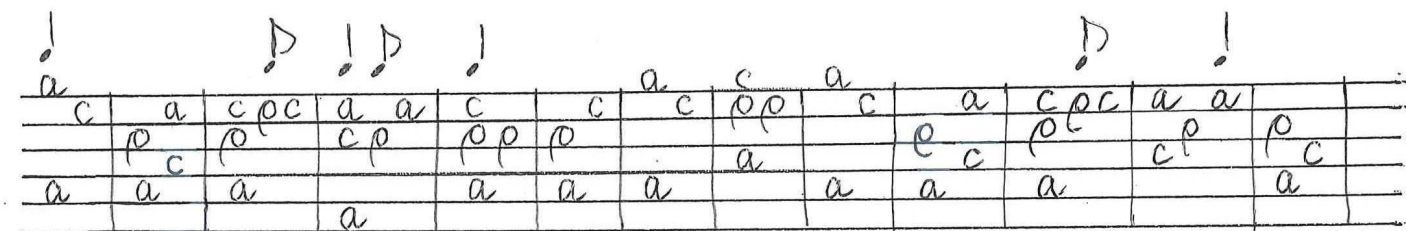
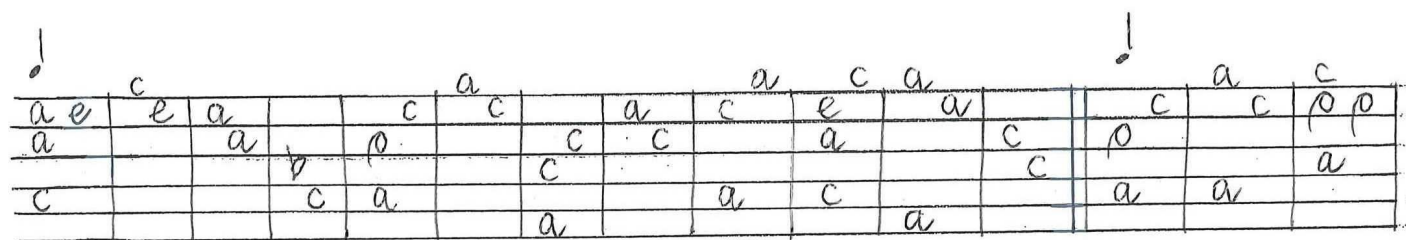
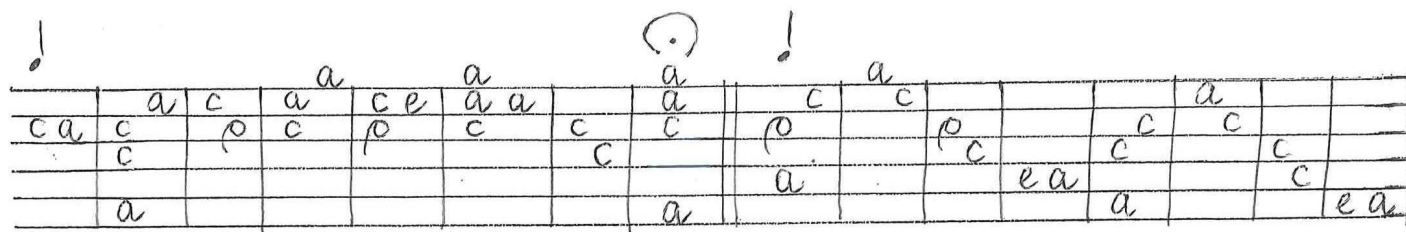
DANSA TRISTA



DANSA TRISTA (cond.)



DANSA ALEGRE No 3 (cond.)



COMPLAINT

Lento

Handwritten musical notation for the first system. It consists of three staves. The top staff has a treble clef and a key signature of one flat (B-flat). The notation includes various note values (quarter, eighth, and sixteenth notes) and rests. The middle and bottom staves contain letter-based notation (a, b, c, p, r) corresponding to the notes above them.

Handwritten musical notation for the second system. It consists of three staves. The top staff has a treble clef and a key signature of one flat (B-flat). The notation includes various note values and rests. The middle and bottom staves contain letter-based notation (a, b, c, p, r) corresponding to the notes above them.

Handwritten musical notation for the third system. It consists of three staves. The top staff has a treble clef and a key signature of one flat (B-flat). The notation includes various note values and rests. The middle and bottom staves contain letter-based notation (a, b, c, p, r) corresponding to the notes above them.

Handwritten musical notation for the fourth system. It consists of three staves. The top staff has a treble clef and a key signature of one flat (B-flat). The notation includes various note values and rests. The middle and bottom staves contain letter-based notation (a, b, c, p, r) corresponding to the notes above them.

Handwritten musical notation for the fifth system. It consists of three staves. The top staff has a treble clef and a key signature of one flat (B-flat). The notation includes various note values and rests. The middle and bottom staves contain letter-based notation (a, b, c, p, r) corresponding to the notes above them.

Handwritten musical notation for the sixth system. It consists of three staves. The top staff has a treble clef and a key signature of one flat (B-flat). The notation includes various note values and rests. The middle and bottom staves contain letter-based notation (a, b, c, p, r) corresponding to the notes above them.

UN SOMNI (A DREAM)

Molto
lento

(1a)

CANÇÓ D'AMOR (LOVE SONG)

♪♪		♪♪♪		♪♪		♪♪		♪♪		♪		♪♪		♪		♪♪	
a	c	a		a	c	a		a	c	a		c		p	a	a	a
a	p		e	e	a	a	c	e		a	p	e		a	a	e	a
a	c		e	e	e		p	e	e	a	c	e	e	a		c	b
c	a				c	e				c	a						c
		c	c					c	c			c	c	p	c		

♩!	♩! ♩!	♩!	♩	♩	♩! ♩!	♩ ♩!	♩! ♩!
a c a		a c p c a		a c a	c	p a a	a
a p	e e	a c	e	a p	e	a a e	a a
a c	e e e	a p	e e	a c	e e	a c	p p
c a		c e		c a			c c
	c c		c c		c c	p c	

!! !.!! ! ! ! !! !.!! ! ! !.!!

с р с	а р	с р а с	а	с р с	а р	с а а	а
а а р	а а а	р а	а	а а р	а а а	р	а а
а	а а		а а	с а	а		а а
а	с с	а		а а	с с	а	с с
с		с р а	с с			р с	

[illegible]

Handwritten musical notation on a five-line staff. The notation includes various notes (quarter, eighth, and sixteenth notes) and rests, with some notes beamed together. The staff is divided into measures by vertical bar lines.

APPENDIX: SETTINGS OF FANTASIES FOR TWO LUTES

FANTASIA No 7

Like a dance

LUTE 1

Handwritten musical notation for LUTE 1, measures 1-50. The notation is on a five-line staff with various notes, rests, and dynamic markings. Measure numbers 5, 10, 15, 20, 25, 30, 35, 40, and 50 are circled. The piece ends with a double bar line and a repeat sign.

LUTE 2

Handwritten musical notation for LUTE 2, measures 1-50. The notation is on a five-line staff with various notes, rests, and dynamic markings. Measure numbers 5, 10, 15, 20, 25, 30, 35, 40, 45, and 50 are circled. The piece ends with a double bar line and a repeat sign.

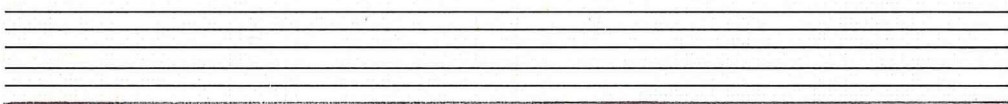
FANTASIA No 10

LUTE 1

Handwritten musical notation for LUTE 1, measures 1 through 45. The notation is written on a five-line staff with a treble clef. It includes various musical symbols such as notes, rests, and accidentals. Measure numbers 5, 10, 15, 20, 25, 30, and 35 are circled. The notation is in a historical style, likely representing a lute tablature or a simplified musical notation for a lute.

LUTE 2

Handwritten musical notation for LUTE 2, measures 1 through 45. The notation is written on a five-line staff with a treble clef. It includes various musical symbols such as notes, rests, and accidentals. Measure numbers 5, 10, 15, 20, 25, 30, and 35 are circled. The notation is in a historical style, likely representing a lute tablature or a simplified musical notation for a lute.



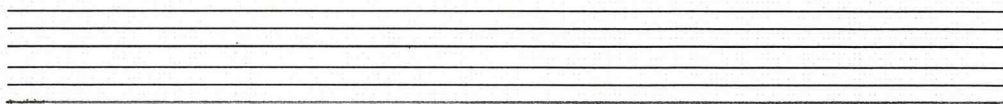
FANTASIA No 18

LUTE 1

Handwritten musical score for LUTE 1, measures 1-65. The notation is on a single staff with a treble clef. The notes are written in a simplified manner, often using letters (a, c, e, g, b) instead of standard musical notation. Measure numbers 5, 10, 15, 20, 25, 30, 35, 40, 45, 50, 55, 60, and 65 are circled. The piece ends with a double bar line and a repeat sign.

LUTE 2

Handwritten musical score for LUTE 2, measures 1-65. The notation is on a single staff with a treble clef. The notes are written in a simplified manner, often using letters (a, c, e, g, b) instead of standard musical notation. Measure numbers 5, 10, 15, 20, 25, 30, 35, 40, 45, 50, 55, 60, and 65 are circled. The piece ends with a double bar line and a repeat sign.



FANTASIA No 12 (lute 1)

LUTE 1

FANTASIA No 15 (lute 1)

LUTE 1

FANTASIA No 12 (lute 2)

LUTE 2

FANTASIA No 15 (lute 2)

LUTE 2

FANTASIA No 21

LUTE 1

Handwritten musical score for LUTE 1, measures 1-70. The score is written on a single staff with a treble clef. It features a series of notes and rests, with some notes marked with a 'p' (piano) or 'f' (forte). The notes are mostly eighth and sixteenth notes, with some quarter notes. The key signature is one flat (B-flat). The score is divided into measures by vertical bar lines. Some measures contain multiple notes, while others contain rests. The notation is in a historical style, with some notes having a 'p' or 'f' above them. The score ends with a double bar line and a repeat sign.

LUTE 2

Handwritten musical score for LUTE 2, measures 1-75. The score is written on a single staff with a treble clef. It features a series of notes and rests, with some notes marked with a 'p' (piano) or 'f' (forte). The notes are mostly eighth and sixteenth notes, with some quarter notes. The key signature is one flat (B-flat). The score is divided into measures by vertical bar lines. Some measures contain multiple notes, while others contain rests. The notation is in a historical style, with some notes having a 'p' or 'f' above them. The score ends with a double bar line and a repeat sign.